

LEWIS SUSTAINABILITY



Photo by Luis Chavez

Luis Chavez

HIGHLIGHTS

UPCYCLE MONTH

SUSTAINABILITY WEEK

COME CLEAN, GO GREEN

EARTH WEEK

OTHER EVENTS & RECAP

GET INVOLVED

INTRODUCTION

Consistent efforts to improve campus and individual sustainability continued this semester. Through our events and programs, we strive to make the greatest impact for both our Lewis community and our partners. We do this by seeking ways to incorporate education around social equity, environmental protection, and economic prosperity. We continued to host a combination of in-person, virtual, and hybrid events. This combination allowed for increased engagement.



UPCYCLE MONTH

In February, Lewis Sustainability hosted Upcycle Month with numerous themed events and social media challenges. The first event was a virtual information session that taught participants the basics of upcycling, particularly what separates it from recycling and downcycling. The next events were in-person events that allowed participants to practice upcycling. The first event was DIY Upcycle Terrariums in which jars were turned into microecosystems for moss. The next event was an Upcycle Plastic Bag event in which participants learned how to give plastic grocery sacs a new life. Plastic bags were turned into coasters, pencil holders, organizers, waste bins, and more. These events together gave participants a way to learn about upcycling, in addition to learning how to put it into practice themselves.



Students turned plastic bags into coasters, bins, and organizers in one events, and jars into terrariums in another.

SOCIAL MEDIA CAMPAIGNS

During Upcycle Month, Lewis Sustainability hosted a Virtual Upcycle Challenge. This allowed participants to get creative and practice the sustainable activity of upcycling themselves. It was also incentivized by offering a chance to win a gift card to all who submitted. Submissions included creations from jars, plastic, and more. Overall, this event showed students how they can help divert waste from landfills to create new, higher quality goods. In addition to the social media challenge, weekly tips were posted, giving students ideas for what they can turn things like jars and plastic bottles into, as well as general information on how to reduce waste in their lives.



Anna Sebastian

SUSTAINABILITY WEEK

SOCIAL MEDIA CAMPAIGNS

During Sustainability Week, we hosted two social media campaigns. The first challenged students to answer the question what future do you want? Submissions could be written or drawn. The other virtual event was Sustainability Bingo in which participants were challenged to complete a Bingo card by completing various sustainable tasks. Participants were entered into a raffle for a gift card.

Sustainability Week's theme this year was The Future We Want. Climate change paints a bleak future for the planet, but there is still hope as solutions continue to be proposed. This hope is what this week focused on. Events included an information session about sustainability, a documentary screening of 2040, and a trivia night. The information session was virtual, the documentary screening had a hybrid format, and the trivia night was in person.



COME CLEAN, GO GREEN COMPETITION

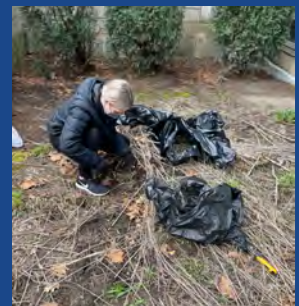
All students pay a \$5 sustainability fee each semester that goes toward the Come Clean, Go Green competition. The competition allows students to propose a \$10,000 to \$50,000 project that will improve campus sustainability. Past winning projects include laminar-flow showerheads, a solar shed, and a biodiesel processor. Proposals were due in April. The submissions included an Edible Landscape with Greenhouse Expansion and involvement in the TerraCycle Recycling Programs, particularly the programs that recycle stationery products and oral care items. The winning proposal will be announced in the fall.



EARTH WEEK



This Earth Week, April 18 to 22, Lewis Sustainability hosted three events. The first event was Prairie Plot Clean-Up and Planting, in which participants helped remove invasive species from the native prairie plot outside of the Arts and Science building, in addition to planting some new native plants into the area. The second event was a guest speaker from Will County Green, Marta Keane. Keane hosted a virtual event where she spoke about recycling contamination. The last event was on Earth Day, April 22nd in which participants were going to help pick up trash from the Burnham Centennial Nature Trail. Unfortunately, this event had to be canceled due to thunderstorms, but Lewis Sustainability still shared information about the history of Earth Day on Instagram to celebrate in a safe manner for students. The focus of this week was to give back to the Earth, so the goal of the events was to renew students appreciation for the Earth, as well as help clean up natural areas.



OTHER EVENTS



In addition to the events listed above, Lewis Sustainability also hosted an Arbor Day Tree Planting event on April 29th. During this event, participants helped plant new trees in the Burnham Centennial Nature Trail. This helped students give back to the planet as trees allow for carbon sequestration that removes some of the excess carbon dioxide in the atmosphere that causes climate change. Lewis Sustainability also posted weekly tips on social media throughout the semester to give students, faculty, and staff background on sustainability and ways to implement more sustainable practices in their lives.



GET INVOLVED

The spring semester provided numerous opportunities for sustainability education.

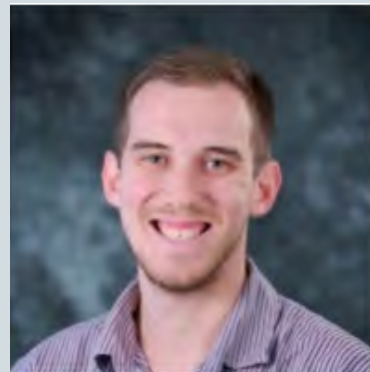
The Lewis community and local communities were both invited to learn about sustainability and how to apply it in their daily lives. Sustainability takes many forms and Lewis University is just one example with our many sustainable features and strides towards change. Events will continue to be held every semester to further education on sustainability. To stay connected, follow us on social media and visit our website at lewisu.edu/sustainability.



LewisUSustainability



LifeatLewisU



John Lerczak

Director of Sustainability and
Facilities Administration

Email: jlerczak@lewisu.edu