

THE MAGAZINE OF
lewisuniversity

SPRING 2014

DOING
BUSINESS
IN A
GLOBAL
MARKETPLACE

President's Perspective

This is the time of the year when governmental leaders typically present a "State of the..." address regarding nation, state, city or village. Were this particular "President's Perspective" meant to achieve the same purpose, I would happily be conveying to you that "the State of the University" is very good. And so it is.

Just as was the case last fall, our second semester enrollment is at an all-time high, and this after graduating around 800 undergraduate and graduate students in December. Despite a very challenging competitive environment, financial restraint by many families, and ongoing debates regarding the necessity of a college education for a successful career, Lewis University continues to grow more rapidly than most peer institutions. Moreover, the academic quality and readiness for success of our students is constantly improving, as is our graduation rate. We are doing commendably in containing costs and limiting tuition increases. At the same time, our effective blend of liberal arts and professional studies readies our students for success in life, in their initial careers, and for jobs and new technologies that do not even exist today. Still further, we are succeeding in injecting an ethical dimension throughout our curriculum and graduating students with good character, leadership ability, and determination to make a very positive difference in society and for their faith communities.

We are moving forward well in the transformation of our new Saint Charles Borromeo Center for the College of Business, the Graduate School of Management and the School for Professional and Continuing Education. It is going to be a real showcase and a genuine asset as our College of Business becomes ever more distinctive. The College of Nursing and Health Professions certainly is already quite distinctive, being regarded as among the finest in Illinois. A large and attractive new addition is being built for their utilization, which will contribute to greater efficiency, quality and growth. Furthermore, we are constructing a small structure at the Lewis Stadium for current teams which practice and compete there, for their fans, and in anticipation of our adding women's and men's lacrosse in the foreseeable future.

Our comprehensive fund-raising campaign will not be publicly announced until the *Signum Fidei* Gala Dinner on September 13. However, we are already achieving fine results, most especially because the members of our Board of Trustees have been exceptionally generous. And now others are doing the same. Happily, there is very good support for endowed scholarships to assist our students across a wide spectrum of fields, including in research opportunities, as well as to make a quality Lewis education more affordable and accessible. In addition, the planned Student Center will be as transformational for campus life, just as has been the new Science Center for our fast-growing science, mathematics, computer science and technology enrollments. The same positive momentum will be realized because of the excellent new educational facilities for the College of Business and the College of Nursing and Health Professions. Still further,



encouraging plans are underway to provide appealing and attractive academic space for the Social Sciences, the Behavioral Sciences and the Humanities. Each provides important dimensions of our core curriculum. Still to follow will be enhancements for the Departments of Aviation and Transportation; Justice, Law and Public Safety Studies; as well as other significant academic fields.

The University continues to add new academic programs, while enhancing many others. However, these new offerings are typically derived from our principal enrollment drivers. They complement our current offerings, while also

being relevant to the career aspirations of current and prospective students. They are as varied as Social Media Marketing, Computer Engineering, Data Science, Forensic Criminal Investigation, Health Care Leadership and Management, Project Management, Curriculum and Instructional Technology, Early Childhood Special Education, Adult Primary Care Nurse Practitioner, Information Security and Risk Management, and Biomedical Science.

Meanwhile, our quite diverse student body continues to make us proud. Many contributed their Christmas holidays or Spring Break to mission service trips throughout the Midwest and even internationally. Our *eFLYER* newspaper just received a very prestigious competitive award. One of our finest female science students will be among only 60 in the nation to present her research in the rotunda of the U.S. Capitol in late April. For the 14th time in the last 18 years, our Mock Trial Team has competed for the national championship. Our Lowell Stahl Center for Real Estate and Entrepreneurship is expanding its services rapidly and offering many appealing and beneficial opportunities for our students. The athletic teams are experiencing an extraordinary year of championships and national rankings. And we have greatly expanded the number of club teams, intramural offerings and wellness opportunities for our residential and commuter students.

In short, this continues to be a dynamic and highly encouraging era for Lewis University. We hope that you feel the same, and that you are already offering enthusiastic and generous support for our Mission and the fine quality of our educational environment for our undergraduate and graduate students. In the spirit of Association, we stand united in advancing toward our ultimate goal of being one of the most distinctive regional Catholic universities in the Midwest. We are blessed as well to have a vibrant Lasallian heritage to unite and empower us. Thank you for your gracious and generous assistance.

Sincerely,

A handwritten signature in black ink that reads "Br. James Gaffney, FSC". The signature is written in a cursive, slightly slanted style.

Brother James Gaffney, FSC
President

THE MAGAZINE OF lewisuniversity

SPRING 2014



The Magazine of Lewis University is published by the Office of Marketing and Communications. Letters to the Editor and alumni news submissions are welcome. Send letters, news and address changes to: **The Magazine of Lewis University**, Unit 196 – One University Parkway – Romeoville, IL 60446-2200 or e-mail lamontra@lewisu.edu / **STAFF** / Dr. Ramona LaMontagne, Executive Director of Marketing and Communications; Jim Cowan '04, Graphic Design Director/Production Manager / **EDITORIAL CONTRIBUTORS** / Matthew Brendich; Michelle Fregoso '11; Allison Rios; Kelly Kolton; Bridgette Robles; Dr. Kurt Schackmuth '98 '02; Kathrynne Skonicki '12 Alex Vasiliades '11 / **PHOTOGRAPHY** / Jerry Daliege; Sylvain Goyette; Ron Molk Photography; Eileen Ryan Photography; Steve Voit Photography; Steve Woltmann / **PRINTING** / ABC Printing

RESOURCES

Admission	(800) 897-9000
	(815) 836-5250
Alumni	(815) 836-5472
Graduate & Adult Admission	(800) 897-9000
	(815) 836-5610
Athletics	(815) 836-5247
PLT Box Office	(815) 836-5500
University Advancement	(815) 836-5244



DOING BUSINESS IN A GLOBAL MARKETPLACE

Dr. Ian Gladding, Dr. Larry Hill and Dr. Frank Rose, Professors in the College of Business, teamed up to provide their insights on the nature of today's global marketplace with respect to the world economy and trade. With international partnerships and relations around the world, the COB has experience and networks to assist our alumni.

We are living in an increasingly dynamic, competitive global economy. Although the world seems smaller because of new transportation, production, and communication technologies, it is still a world profoundly affected by macroeconomic and geopolitical forces that affect the types and magnitude of business opportunities and risks possible for businesses that now are being forced to operate with increasingly scarce resources.

In this challenging business environment, managers must be able to create successful strategies and adjust to uncertainties brought on by changing global economic and political forces on the one hand, and the unique business environments of specific countries on the other hand.

New technologies as well as government deregulation, privatization and cooperation among countries around the world have all contributed to the integration of national economies and increasing interdependence among countries, a boom in foreign direct investment, and international trade and expanded economic growth throughout the world.

THE WORLD ECONOMY

The economics of globalization are rapidly pushing us into one giant economic union. So the question becomes why is all of this happening? The answer lies in the concept of Comparative Advantage, an economic theory that has been in existence for centuries.

Remember that an economic theory is composed of assumptions, deductions, and conclusions. The best theory is one that confines the problem to simple assumptions that hold everything constant, and changes one variable at a time. Comparative Advantage assumes the following:

Comparative Advantage

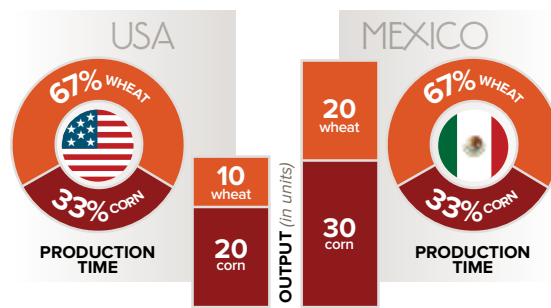
Comparative Advantage means that one person or country is better at producing both goods.

If we are to prove that countries should lower their trade barriers so each country can specialize at what it does best, or where it has the least disadvantage, we must prove this specialization results in increased product. Comparative Advantage assumes the worst case where one country is dominant in producing both goods. In this example (figure 1) we see that Mexico produces more corn (30) and wheat (20) than the United States produces corn (20) and wheat (10). Mexico has the best advantage in both corn and wheat. In this sample, Mexico produces 30 units to 20 units of corn spending the same amount of time as the United States on corn. This is a 1.5 to 1 advantage (30 divided by 20.) The wheat production of Mexico is a two-to-one advantage (20 divided by 10.) Mexico has the best advantage in wheat and the United States has the least disadvantage in corn. The U.S. should produce corn and Mexico should produce wheat.

Comparative Advantage results in the U. S. producing 60 units of corn (one-third x equals 20, multiply both sides by 3 and the result is

Comparative Advantage

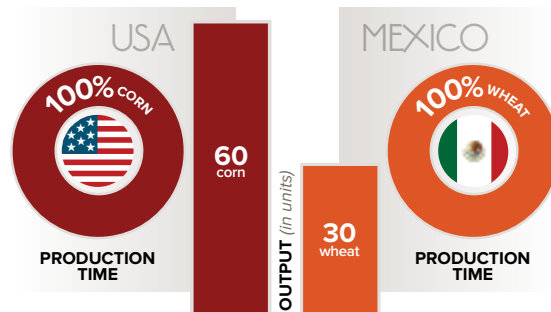
Before Specialization



Total output: 50 units of corn 30 units of wheat

After Specialization

Total output of corn increases to 60 units, while wheat output remains 30 units.



Total output: 60 units of corn 30 units of wheat

This concept leads to countries combining into economic unions like NAFTA and the European Union. Because of this, they don't tax each other as goods pass through their borders because they have common economic policies. In other words, they mimic the United States. Just as we cross from Illinois to Indiana or any other state in the U.S., the Germans can cross the French border in the same manner.

figure 1

X equals 60.) Before specialization, Mexico produced 20 units of wheat in two-thirds of its time. Algebraically, that is shown as two-thirds X equals 20, multiply both sides by 3, the result is $2X$ equaling 60. Divide both sides by 2, and the result is x equals 30. The result of Comparative Advantage shows that total output in corn increases from 50 to 60, and the total production of wheat stays the same at 30.

Based on economics alone, this proves that a country or person should specialize if that country is better at producing both goods. This means that countries should not protect their inefficient industries and should allow free trade to be cost effective.



North American Free Trade Act

The North American Free Trade Act (NAFTA), which began in 1994, permits free trade among Canada, the U.S., and Mexico. The three countries have agreed not to tax each other for goods produced in each other's countries. They have agreed to the free flow of trade across their borders. For example, assume the U.S. has a Comparative Advantage in all products over both Canada and Mexico (this is not the case). This concept means that jobs in areas where the U.S. has the least advantage will go to Mexico or Canada, and the U.S. will produce only those goods where it has the best Comparative Advantage. Politically, this hurts the U.S. labor market because it will require retraining and dislocation of workers in the U.S., but there will be an increase in goods and services for all countries.

Established in 1994, **NAFTA** permits free trade among Canada, the U.S., and Mexico. These countries have agreed not to tax each other for goods produced in each other's countries, and to the free flow of trade across their borders.

How does this lead to Globalization?

If China has a Comparative Advantage in putting Christmas tree lights together, and the U.S. has the advantage of making the highly skilled LED lights, then each country should do what they do best. The total cost of making the product will be lower for everyone. If the transportation costs of shipping the parts plus the cost of making the lights are less in China than in the U.S., then China should make them. Global trade comes down to the following formula in this scenario:

If the Chinese cost of putting the lights together + their transportation costs < United States cost of putting the lights together, then China should manufacture the product.

That, of course was the main reason manufacturing left the U.S. in the last 30 years. It was the reason our cars were built in Japan for

many years. Corporations bought companies where they could take advantage of this formula. That also explains the rise of the multi-national corporations.

The Europeans realized that it would be to their advantage to form one big union with one monetary policy, and no taxes between countries to shelter their trade. (They are still working out the specifics of making sure no one takes advantage of the other, but don't think for a minute the European Union will fall apart.)

Someone is going to say: "Hey, the Japanese and Germans are assembling their cars in the U.S. now, and manufacturing is starting to return to the U.S." That's true and easily explainable. The Japanese workers over time said they needed more money and their wages have increased. The Chinese have been doing the same, and actually outsourcing to Burma and other lesser-developed countries where the labor is cheaper. As the Chinese population gets tired of pollution, they will demand a cleanup, and their costs will rise. This will make their cost of production plus transportation costs greater than ours at some point. Eventually production will come back to the United States.

Comparative Advantage is the force behind the global economy. How does that impact international trade?



INTERNATIONAL TRADE

The concept of Comparative Advantage shows that with specialization and trade the world's resources can be used more efficiently, producing more goods for consumption. Another academic concept, the theory of factor endowments, leads to the same conclusion. This theory says that countries should produce and export goods that can be made with factors of production (land, capital, labor) in which the country is well-endowed.

Academic theories may have formally described the basic motivations for international trade and investment, but multinational firms and government policy makers have made it happen. Corporations which initially produced for domestic consumers have grown by exporting to foreign markets. When exporting has gotten expensive, they have invested in production facilities overseas to make products closer to their foreign customers. Governments have encouraged this by agreeing to reduce barriers to trade and investment, bilaterally and multilaterally.

While more efficient production, fostered by globalization, has expanded the global 'pie' – there are more goods produced, there are more goods available for consumption – concerns regarding equitable distribution of that pie are complicating efforts to facilitate the further growth of international trade and investment. The latest round of multilateral trade negotiations, the so-called "Doha Round" (the negotiations were begun in 2001 in Qatar's capital city, Doha) in which 160 countries are jointly negotiating further reduction in trade barriers under the auspices

of the World Trade Organization, are bogged down because of disagreements over subsidies and other trade policies. Emerging market countries, for example the 'BRICS' (Brazil, Russia, India, China and South Africa) which have been among the principal beneficiaries of globalization in recent years, have a strong voice in these discussions and

they are arguing for certain advantages that the developed countries are unwilling to agree to.

Discussions of a Trans-Pacific Partnership among the U.S. and eleven other countries, aimed at establishing freer trading in the Pacific Rim, are moving slowly because of equity issues. For example, Japan doesn't want to permit freer imports of rice even though foreign rice might be less expensive than domestically produced rice. The U.S. may be reluctant to allow freer imports from South Korea which may compete with U.S. production. Negotiations of a similar free trade area on the Atlantic side of the U.S., the Trans-Atlantic Trade and Investment Partnership, are running into similar difficulties.

NAFTA has always been controversial, not because anyone doubted the efficiency gains that could be derived from free trade, but because of equity concerns like who benefits from those gains. If the 'pie' is bigger – and there's substantial evidence that NAFTA has helped grow the pie in North America – but some American jobs have moved to Mexico, then there are workers, companies and politicians who are unhappy regardless of the trade benefits. While efficiency of production may have been the economic stimulus, the reality of how things are implemented and who gains are at times political.

What Can We Expect Moving Forward?

It could be that further increases in free global commerce will be difficult to achieve because so much has been accomplished already. The world has moved a long way in the direction prescribed by the theories of Comparative Advantage and factor endowments and there are not as many trade barriers to eliminate now as there were several decades ago. However, there are undoubtedly further efficiency gains to be achieved, and sorting out the efficiency vs. equity issues will continue to be at the crux of discussions regarding future globalization.

NAFTA has always been controversial, not because anyone doubted the efficiency gains that could be derived from free trade, but because of equity concerns like who benefits from those gains.



Another point worth making on the phenomenon of globalization has been highlighted by the financial crisis and other events since 2008. The essence of globalization is a greater integration of economies and financial markets on a grand scale. There have been so many events in the past five years illustrating the strength of this integration. The economic slowdown in the U.S. leading to fewer imports from trading partners and less investment abroad created a drag on economies worldwide, developed and developing. The Fed's stimulus efforts, now being wound down, first helped emerging markets through increased investment flows, and now is having an opposite effect as those investment flows are reversing. Several years ago, many Americans would have thought that what happened in Greece's tiny economy, about 1.5% the size of the U.S. economy, didn't matter much to them. Not anymore. The Greeks' mismanagement of their economy led to a crisis in Europe which had ripple effects impacting the U.S. and all of Europe's trading partners. A final example is China, now the world's second largest economy but once, not too many years ago, a huge, heavily

populated backwater country not very closely integrated with the rest of the world. Before the financial crisis hit in 2008, China's economy was growing rapidly, 10% per year or more. Then, the country's growth slowed for a few quarters as a result of the crisis, but soon regained its strong growth and helped pull the rest of the world out of recession. How? Via the trade and investment links that define and characterize globalization.

How can businesses take advantage of opportunities in emerging markets?

- Understand the national politics and role of government in targeted BRICS (Brazil, Russia, India, China, South Africa) and MINT (Mexico, Indonesia, Nigeria, Turkey) countries - i.e., to what extent is government a partner, a customer, etc.
- "Cooperate to compete" to take advantage of new opportunities and risks - cooperate with established, experienced companies in domestic as well as targeted countries.
- Understand national cultures and ways of doing business in targeted countries - globalization has created the merging of consumer tastes but local differences still require companies to adjust products, services, and ways of doing business to be successful.
- Utilize resources available in Illinois. There are resources and assistance available in Illinois, including government assistance and programs:
 - Illinois Department of Commerce and Economic Opportunity, International Trade and Export Assistance at illinois.gov/dceo/Bureaus/EntrepreneurshipAndSmallBusiness/Pages/InternationalTradeAndExportAssistance.aspx
 - State of Illinois Small Business International Trade Centers at illinois.gov/dceo/SmallBizAssistance/BeginHere/Pages/ITC.aspx
 - U.S. Department of Commerce, International Trade Administration (See Trade and Services) at <http://trade.gov/>
- Lewis University seminars and courses are offered in International Entrepreneurship in the College of Business, and courses in the Lowell Stahl Center for Entrepreneurship. Contact International Experts: Drs. Frank Rose, Ian Gladding, Laura Leli Carmine, or Larry Hill at lewisu.edu/cob.



INTERNATIONAL EDUCATION AT LEWIS

The University is involved in many international initiatives from study abroad trips to expansion of the foreign language program, and majors such as International Business and International Relations. Literally, every College at Lewis University is working with its students to understand the importance of learning about other cultures. The following articles illustrate a few highlights.

International Education Fall Highlights

Lewis University presented a series of workshops and special events as part of the International Education Month called “Awareness... Education... Celebration” throughout November.

“Awareness... Education... Celebration” is a series of university-wide events through the Office of International Student Services recognizing the increase in international scholarship by faculty, development of global perspectives in curriculum, outreach to Lasallian and non-Lasallian partners and expanded global connectedness through study abroad, international recruitment and programs. This collaborative event brought together faculty, staff and students in celebration of our richly diverse community. The program events were organized by region: the Americas, Asia, Europe, Middle East and Africa.

“Doing Business in Japan” successfully kicked off the Topics in International Business series presented by the College of Business. The speaker series featured a number of companies doing business internationally.

“Doing Business in Japan” featured a presentation by William Johnson, CFO of Cabot Microelectronics, Inc., a multinational firm based in Aurora, Ill. Johnson’s firm has had operations in Japan and other Asian countries for a number of years. The following week, “Doing Business in Turkey” was presented by Dr. Ibrahim Mescioglu, assistant professor of management information systems. “Doing Business in Palestine” was presented by Iyad Rock, a graduate student in the College of Business. The final presentation on “Doing Business in South Korea” was presented by Dr. Yuntaek Pae, assistant professor of finance.

Lewis University and St. Mary’s University of Minnesota students, faculty and staff participate on a Holy Land pilgrimage.



Students Travel Overseas on Pilgrimage

Students from Lewis University and St. Mary’s University of Minnesota traveled together to Israel and the Palestinian Territories over winter break as part of a pilgrimage. Organized by University Ministry, the students of these Lasallian universities visited Bethlehem University, encountered the people of the Holy Land and visited many of key historic sites including Jerusalem and the Sea of Galilee.

“The pilgrimage gave us an opportunity to broaden our perspective and be more culturally aware,” said Yolanda Franco, student leader. “The best way to learn is to experience something yourself and this pilgrimage did that.”

During the fall semester, the students met by video-conference in four joint pre-trip meetings. Some of the themes included pilgrimage, the book *People of the Book*, and the contemporary Middle East. Most of the Lewis University students were enrolled in Dr. Dennis Cremin’s Pilgrimage in History workshop.

Lewis students who attended the pilgrimage were Elizabeth Japczyk, Theresa Marten, Eric Seiberlich, Yolanda Franco, Robert Sidewicz and Megan Zeugner. They were accompanied by seven students from St. Mary’s University.

Dr. Cremin and Dr. Dominic Colonna, professor of theology, coordinated the travel study along with Michael McKeon, University Minister, and two staff members from St. Mary’s University. The group was also accompanied by Brother Peter Iorlano, FSC, who has taught for a number of years at Bethlehem University.

Travel Study Programs

Bethlehem
(Israel and Palestine)
Pilgrimage 2013
Travel Study Program

Greece
2014 Travel Study Program
(Nursing & Health Professions)

Italy
Travel Study 2014 (Arts & Sciences)

London
(England) 2014
Travel Study Program (Arts & Sciences)

New York City
Broadway Experience
2014 Travel Study

St. Petersburg
(Russia) 2014
Travel Study Program (Arts & Sciences)

Uganda
(Africa) 2014
Travel Study Program (Arts & Sciences/
Business)

MLK. Honored with Weeklong Celebration

Lewis University celebrated Diversity Week in honor of Dr. Martin Luther King, Jr. with events taking place from January 27-31.

Celebrate Diversity Week 2014 featured topics on: "Beloved Community: Fulfilling the Promise," "Inclusion as the Norm," and "Emerging Issues of Title IX in Education and Athletics." "Black Student Union Open Mic" showcased talented Lewis University students as they performed poetry, songs, instrumental selections and more.

Dr. King used Gandhian nonviolence. Dr. James Burke, associate professor of theology, argued that nonviolent conflict strengthens democracy by increasing political participation. He introduced Campaign Nonviolence, which intends to rebuild U.S. communities by fighting drones, poverty, and environmental destruction.

Dr. Calvin Edwards, chair and professor of justice, law and public safety studies, led a panel discussion examining the discretion of prosecutors that has contributed to racial disparity in the incarceration of minorities' in the criminal justice system. The panelists also addressed the sentencing guidelines that contribute to racial disparity and alternative strategies that focus on making communities safe.

"A Look at the Impact of MLK's Assassination" featured an interactive panel discussion to address the impact that Martin Luther King's death has on today's society and reflect on how the dream is lived out in the world today.



Diversity Week 2014

Building the Beloved Community

The final day of Diversity Week featured "Living the Dream: Unveiling the Wall of Oppression." This culminating event challenged the community to continue the diversity exploration beyond the week.

Dancing, Food and Film Make the Black History Month Activities Educational and Fun

Black History Month kicked off with the opening ceremony, "Encourage, Empower and Engage" on February 3. The rich history of African Americans with music, entertainment, food and a special dedication to Nelson Mandela, South African activist and former president, featured student groups and reflections. Attendees came together to celebrate the positive and powerful impact African Americans have made all over the world.

Line dancing has evolved into an extremely modern, urban dance style that is popular across the globe. Instructor Beylinda Head of "Lines in Motion" Line Dancing Group and Bolingbrook Club Coop came to teach the latest and most popular line dances.

A documentary screening of "Dark Girls" and discussion was held on February

12 in the Student Union. "Dark Girls" is a controversial documentary film that explores the prejudices that dark-skinned women face throughout the world. Audience discussion after the film was facilitated by Dr. Tennille Allen, associate professor of sociology and director of the African American Studies Program.

A "Black and Latino Historical Crossings" presentation addressed the unique perspectives of individuals who identify as both Black and Latino and how that identity (among others) can impact the educational experience. Dr. Gabriel Cortez, assistant professor, Department of Educational Leadership and Development at Northeastern Illinois University led the conversation about the history of Africa and its impact in Latino communities.

"The Great Debaters" was shown on February 20 in the Student Union. Based on a true story, this Denzel Washington/Oprah Winfrey film examines the challenges that young African-American men and women faced in the 1930s. A discussion afterward was led by Dr. Allen and Dr. Mark Schultz, professor of history.

The "Black Heritage Ball" took place on February 21 in the University Dining Room. The evening included a special dinner, recognition of the BSU executive board, entertainment and dancing.

Concluding Black History Month, "The Heart and Soul Food Experience" was held on February 28 in the Student Union. Soul food has always been a dominant part of the African American culture. Its flavor and presence in celebrations and Sunday dinners has been traditional. The way soul food is typically prepared has often been linked as contributing to high blood pressure and heart disease, but there are healthier ways to eat this food. Attendees of the event enjoyed live music and great tasting soul food prepared in a healthy way.

John L. Allen, Jr. Vatican correspondent and senior Vatican analyst for CNN, speaks during the 12th Annual *Signum Fidei* Lecture March 20 at Lewis University.



Signum Fidei Lecture Brings Vatican Correspondent to Campus

Veteran Vatican correspondent John L. Allen Jr., who also serves as the senior Vatican analyst for CNN, came to campus on March 20 to talk about the evolving saga of Pope Francis and his impact on both the Church and the world of his times, arguing that it adds up to a revolution in Catholic life. Allen covered the resignation of Benedict XVI and the election of Francis from Rome, has spent time in Argentina developing background on the new pope, has covered Francis' major trips and decisions, and also has interviewed all the major figures on the Roman scene with insight into "The Francis Revolution."

Early Childhood Offers Workshops for Parents and Caregivers

STAR NET Region VI and the College of Education held their seventh annual conference at Lewis University on March 5. Approximately 200 parents, caregivers and professionals who shape the lives of children ages birth to 5 years old came to the main campus to hear the latest techniques and issues in Early Childhood Education. Workshops addressed six themes of social/emotional, speech and language, accommodations, early literacy, health and wellness, and best practices and included topics from science, to learning dual languages, to dealing with trauma.

STAR NET provides training, consultation, and resources to the early childhood community. The STAR NET system assists the State Board of Education in meeting local needs by providing services to professionals and parents of young children with special needs throughout Illinois.



Lewis University student Rachel Reardon introduces a presentation on Pinterest during the STAR NET Region VI and the College of Education seventh annual conference at the Romeoville Campus.

Sherwin-Williams Employees to Earn Chemical Coatings Certificate

Lewis University and Sherwin-Williams have partnered to provide Sherwin-Williams personnel with academic programs and resources that will assist them in achieving the professional development goals of their employees. In fall 2013, a Certificate in Coatings program was launched. This 21 credit hour program was designed by the Departments of Chemistry and Physics at Lewis University. The coursework is planned to be delivered primarily online with intensive face-to-face laboratory experiences scheduled for summer. This certificate has been customized for the needs of the Sherwin-Williams employees and will provide them an opportunity to move ahead within the organization.



All of the courses in the Certificate in Coatings will apply toward meeting the requirements for a Bachelor of Arts degree in Chemistry at Lewis. All Sherwin-Williams employees are eligible for a tuition discount if they attend any online, accelerated undergraduate program at Lewis University.

Computer Engineering Undergraduate Degree to be Offered

The Lewis University Board of Trustees approved a new Bachelor of Science degree program in Computer Engineering to begin in fall 2014. The program focuses on computing in all forms, from microprocessors to embedded computing devices to laptop and desktop systems to supercomputers.

“Much like Computer Engineering is a marriage of Computer Science and Electrical Engineering, this program marries Lewis University’s expertise in computing with clear market demands,” explained Dr. Ray Klump, Chair of the Department of Mathematics and Computer Science.

Lewis’ nationally recognized and long-established Computer Science program will provide a solid foundation for the new program, which has a very positive job outlook. *Forbes Magazine* listed Computer Engineering field as the No. 2 highest starting average salary for the Class of 2013, averaging \$70,300 for new graduates. The Bureau of Labor Statistics predicts that Computer Science and Computer Engineering will see nearly 300,000 new jobs by 2020.

The interdisciplinary curriculum combines mathematics, computer science, physics and electrical engineering to teach students how microprocessors function, are designed, and can be optimized; how integrated systems of



electrical components can be wired to process data and instructions; and how software is written to run optimally on specific hardware platforms. Students will

also learn to develop the next generation of computing devices.

In February the Board also approved the following new degree offerings: a master’s in Data Science; and bachelor’s degrees in Interactive Media, Spanish Language Culture, Spanish Language Arts, and Biomedical Sciences.



Electric Vehicle Charging Stations are on Campus

Electric vehicles will now be able to be charged on the Lewis University main campus in Romeoville. Two dual electric vehicle (EV) charging stations have been installed and are in use.

Lewis University faculty, staff, students and visitors can utilize the stations. Parking lot “F” has four spots reserved for charging electric vehicles. In order to accommodate the current demand of electric vehicle drivers on campus, each station has the ability to quickly charge two vehicles at one time.

The decision to install the charging stations was made after a survey of the Lewis University community showed there was a demand for them. Most of those submitting the survey supported installing the stations on campus. More than 60 people indicated that they would consider purchasing an electric vehicle in the future after the installation of the stations.

The program was partially funded through the Illinois Department of Commerce and Economic Opportunity and the Electric Vehicle Infrastructure Rebate Program.

President’s Sixth Annual Art Show Highlights Lewis University Talent

This year’s President’s Sixth Annual art show featured 41 artworks and 12 students received awards for the show. The juried exhibition is hosted by the Department of Art and Design and sponsored by Brother James Gaffney, FSC, President of Lewis University.

Lauren Trzeciak won first place for “Petals,” Kendra Mills took second place for “Extremely Loud and Incredibly Close,” and Nicole Nellen placed third with “Sylvia’s Letters.” Winning Honorable

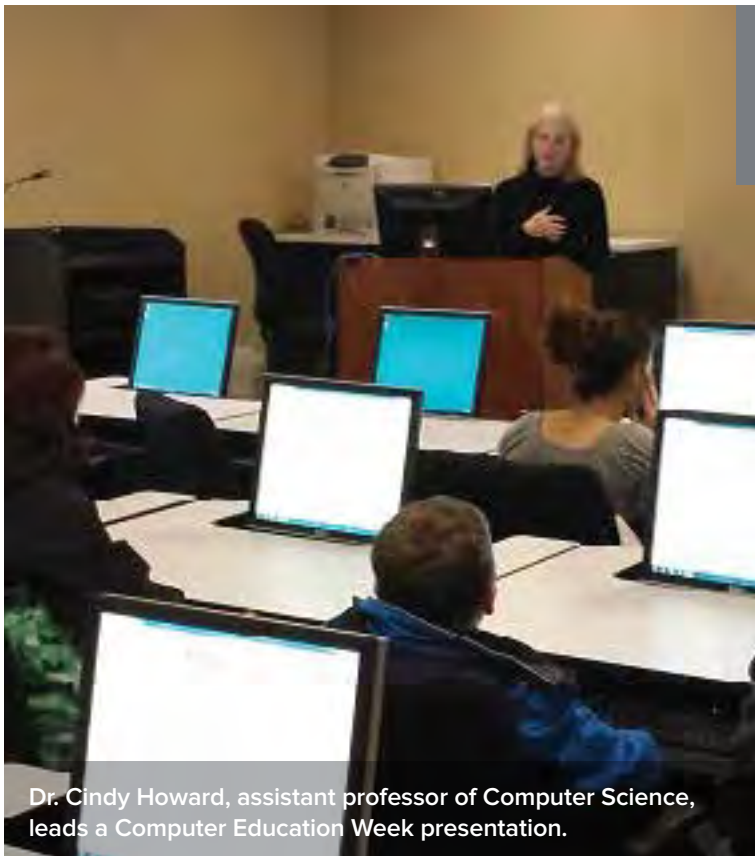


Ceramic on canvas “Petals”, by senior Lauren Trzeciak, took first place.

Mention Awards were students Kendall Dale, Jaymie Doyle, Alfredo Melendez, Milton Bradley Harmon, Laura Pindelski, Brianna Richards, Jessie Richey, Marissa Gonzales and Rachel Holan.

“Watching students develop as Art students is very encouraging,” commented Br. James. “Each student brings his or her own talents, personal histories and artistic goals to produce artwork that is unique and quite engaging. I am pleased to sponsor this competition and exhibition annually to support our students in the creation of impressive art pieces.”

The Brent and Jean Wadsworth Family Gallery is located in the Oremus Fine Arts Center at Lewis University. The Department of Art and Design manages the gallery events. More information is available about the Art Gallery and exhibits by contacting Natalie Swain swainna@lewisu.edu, Art Gallery coordinator.



Event Marks Computer Science Education Week

The Lewis University Department of Mathematics and Computer Science recently hosted “Hour of Code,” a community event for high school students that offered an introduction to computer programming.

Using a programming environment called Scratch, Dr. Cindy Howard, assistant professor of mathematics and computer science, guided the participants as they developed a game called Cheesy Cat. In this game, the hero, a cat the player controlled, was tasked with avoiding the persistent advances of vengeful bowls full of cheesy puffs. Through this game development, the students experienced the building blocks of all software development: sequence, selection and repetition as they created something fun.

This event was offered as part of the national Computer Science Education Week Dec. 9-15 celebration. The initiative aims to spotlight the importance and value of developing programming skills for people from all walks of life. The celebration has featured “Hour of Code” events all across the country, including several that have been sponsored by tech giants like Apple, Google and Microsoft.

Dr. Cindy Howard, assistant professor of Computer Science, leads a Computer Education Week presentation.

Ryan O’Keefe Wins \$5,000 in Business Plan Competition

Business student Ryan O’Keefe received \$5,000 for winning the Business Plan Competition hosted by the Lowell Stahl Center for Entrepreneurship and Real Estate at Lewis University.

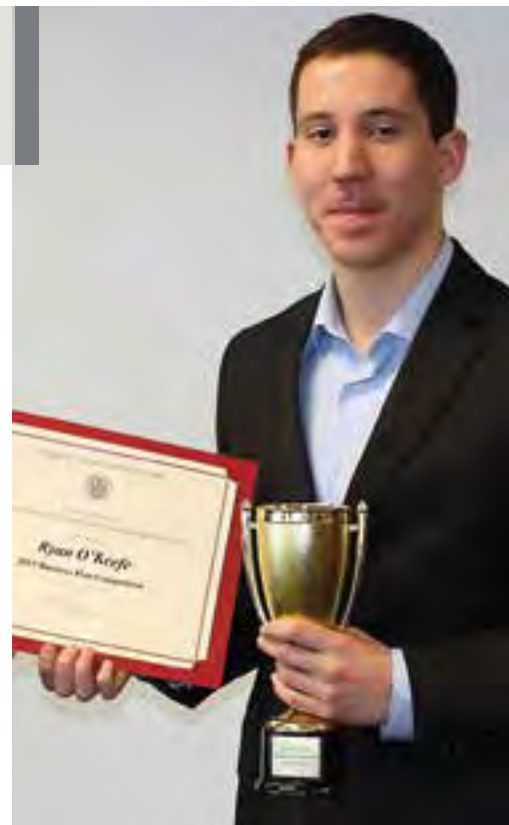
The funds will be used toward O’Keefe’s proposed online business, “Custom Survival Inc.” The proposed online business produces customized zombie apocalypse survival guides and other related products.

The Business Plan Competition is a campus-wide competition that awards prize money for students who have best outlined a new venture and exemplified the entrepreneurial spirit. The Stahl Center hosts two Business Plan Competitions each academic year, in the Fall and Spring term. The competitions are open to all students, graduate and undergraduate, within the university. Students formulate an idea, develop a business plan and pitch their idea to a panel of judges. The judges

also serve as the Advisory Board for the Stahl Center.

Other teams that presented noteworthy business plans for the Fall 2013 competition included the following: a plan for a holistic health coaching company, presented by Brittani Alston, Emily Goodell, Megan Sea-Macac, Zachary Sladek, Rachel Tau and Jeffrey Wegrzyn; a strategy for a turkey comfort food truck, proposed by Jodi Steinberg, Geoffrey Steinberg, Derek Frommel, Lara Jones, Katie Curtis and Erin Cox; and a proposal for business improvements to the Cove Apartments submitted by Stephanie Aguas.

“Writing a business plan is the first key step in translating a great idea into a great business. A business plan is a blueprint entrepreneurs use to address the uncertainties surrounding the decisions investors make to evaluate the venture’s potential,” explained Kristin Nance, director of the Stahl Center.



Student Ryan O’Keefe wins the Business Plan Competition hosted by the Lowell Stahl Center for Entrepreneurship and Real Estate at Lewis University.



(L to R) Dr. Jim Houlihan celebrates Coach of the Year Award with Ed Stern, who earned the honor previously as coach of Boston University.

Dr. Houlihan Earns Coach of the Year by International Mediation Organization

Dr. James Houlihan recently earned the Fred Lane Coach of the Year Award by the InterNational Academy of Dispute Resolution (INADR) for the performance of the Lewis University Mediation teams and quality of the students, both in and outside the competition matches. The professor of the Department

of Justice, Law and Public Safety Studies and director of the Pre-Law program was honored for his leadership, and ethical and collegial manner.

While presenting the award, Dick Calkins, treasurer and founder of INADR, said Lewis University mediation teams have consistently exhibited the qualities of a peacemaker: cooperation, understanding and creativity.

In the past six years, Lewis University successfully competed in England and Scotland Law School tournaments. During the

2013 season, the Lewis University Mediation Team finished in third and fourth place at the INADR championship competition. Lewis University teams have ranked in the top since their entry into the mediation competitions six years ago under Dr. Houlihan's leadership.

The award citation credited Dr. Houlihan with the Lewis University students' display of the positive characteristics of a peacemaker: courtesy, civility, fairness and sportsmanship. His positive attributes make him a problem solver and harmonized while assisting in competitions. He also has helped teams from other schools that are new to mediation through counseling and advice.

Dr. Houlihan is the first individual to be selected Coach of the Year in both Mediation and Mock Trial. He earned the Mock Trial coaching award in spring 2012. He has been coaching the Lewis University Mock Trial since it started in 1996.

Other coaches that assist with Mediation include Angela Henderson, attorney at Henderson Law and Mediation Center in Joliet and Joseph Volin, alumnus and assistant director of Lewis Alumni Relations.

Mock Trial Teams Finish in Top 10 at Yale Invite and Advances to National Competition

The Mock Trial team divided its talents and competed at two competitions Dec. 7-8, sending teams to participate in the Yale Invitational in New Haven, Conn., and the Illini Invitational in Urbana-Champaign, Ill. The team that went to Yale finished in the top 10 among 44 teams.

At the Yale event, Lewis split with Yale in the opening round and swept the University of Pennsylvania and Hamline University of St. Paul, Minn. Playing for first going into the final round against Massachusetts' Brandeis University, Lewis was knocked down to a 10th place finish in the final round. Fractions of points separated the teams in the top

10. Just seven points separated Lewis from fifth place New York University.

Michael Noe and Anthony Scorzo from Lewis were both awarded the Outstanding Witness Award. Only 14 among more than 300 individuals received this honor.

Other Lewis competitors at the Yale Invitational were: Megan Arehart, David DeSchepper, Maggie Huggins, Andrew Lichtenstein and Kat Skinner.

In Champaign, the team of Ray Banda, Larry Beyer, Darrell Boisdord, Amber Milliron, Ashley Patek, Martin Romo and Erica Swanberg finished in 18th place. They competed against the University of Illinois, Elmhurst College, Northwestern University and DePaul University. "All the team players

played and scored well," said Head Coach Dr. James Houlihan.

"The Mock Trial team continues to compete among top schools in the country," noted Brother James Gaffney, FSC, President of Lewis University. "By doing so, the students experience a level of thoughtful preparation and intense competition that will prepare them for careers in law or related fields."

Coaches include Bill Rock '05, an attorney, Cary Hansing '12 and Paul Namie '06. All three of the coaches are Lewis alumni and former award-winning members of the Flyers Mock Trial team.

"The Mock Trial team continues to compete among top schools in the country."

Brother James Gaffney, FSC

FACULTY NEWS

BIOLOGY PROFESSOR PRESENTS AT GENETICS CONFERENCE

Dr. Erin Zimmer (Biology) presented a talk entitled “Genetics Curricula: How Do We Splice and Package It?” during the Undergraduate Genetics Educators Workshop at the American Society of Human Genetics Annual Meeting, held in Boston this past October.

IBHE AWARDS NURSE EDUCATOR FELLOWSHIP

Dr. Daisy Sherry (Nursing) recently received a \$10,000 Nurse Educator Fellowship Award from the Illinois Board of Higher Education. The funds of the fellowship will support her faculty development. The Nurse Educator Fellowship Program promotes the retention of well-qualified nursing faculty at institutions of higher education that award nursing degrees. The fellowship supplements the recipient’s salary and helps to defray the expenses of professional and continuing education.

NURSING FACULTY PRESENT AT AACN CONFERENCE

Dr. Suing Li (Nursing) presented the topic of “Inter-professional Collaboration: Determining Authorship When Publishing Group Projects” at the American Association of Colleges of Nursing (AACN) in Naples in January. She and Maureen McCormick (Nursing) presented at the AACN Master’s Conference in Scottsdale in February on the topic, “Implementing a Flipped Classroom Model to Teach Health Assessment.”

LEWIS HUMANITIES PROFESSORS COLLABORATE ON ORIGINAL COMPOSITION

This past September, an original composition by Dr. Michael McFerron (Music), “X Marks the Sirens,” arranged for mezzo-soprano and fixed media with lyrics taken from a poem by Dr. Jackie K. White (English), premiered in New York City. The composition was performed by singer Katherine Crawford.

THEOLOGY AND BUSINESS TEAM UP ON ASSESSMENT

Dr. Karen Trimble Alliaume (Theology) and Dr. George Klemic (Business Administration) presented “The Sacred and the Secular: Addressing Critical Weaknesses in Critical Thinking Across Very Different Disciplines” at the Association for Assessment of Learning in Higher Education in Lexington last June. They discussed common and converging assessment processes and interventions taken by faculty in very disparate disciplines and colleges – one department focused on qualitative assessment and the other on quantitative. Findings were remarkably similar, with both assessment teams independently developing interventions that could be seen as mutually supportive of student learning outcomes.

BUSINESS PROFESSOR ASSESSES RISK FOR CANCER PATIENTS

Dr. Ibrahim Mescioglu (Business) presented the findings of two research projects at the annual meeting of the American Society for Radiation Oncology (ASTRO) in September in Atlanta, along with coauthors from Loyola School of Medicine. The topics presented addressed “Predicting Symptomatic Pneumonitis in Lung SBRT Patients Using Decision Tree Analysis” and “Decision Tree Predicting the Tumor Shrinkage for H & N Cancer: Implications for Adaptive Radiotherapy.” In these studies, data analysis was used to develop a risk assessment methodology for cancer patients.

EDUCATION PROFESSOR SPENDS SABBATICAL IN SOUTH KOREA, THAILAND AND MALAYSIA

Dr. Seung Kim (Secondary Education) spent her spring 2013 sabbatical learning about different cultures and historical events in South Korea, Thailand and Malaysia. She interviewed faculty members at Burapha and Chulalongkorn Universities in Thailand, was a guest lecturer at a Teacher Training Camp in Saraburi Province, and gave a presentation to a graduate student seminar at Burapha University. The sabbatical allowed her to sharpen her understanding of social justice and equity in education from an international perspective, while developing faculty relationships in Thailand.

Brother James Receives Papal Recognition



Brother James Gaffney, FSC, President of Lewis University, received the *Pro Ecclesia et Pontifice* ("For the Church and Pope") medal Tuesday, November 26 at

the Cathedral of Saint Raymond Nonnatus in Joliet. The Most Reverend R. Daniel Conlon, Bishop of Joliet, presented the Papal Recognition during the closing Mass and Celebration of the Year of Faith to Brother James and to ten other outstanding members of the Diocese of Joliet.

Also known as the "Cross of Honour," the award is conferred for distinguished service to the Catholic Church by lay persons, religious and clergy. It is the highest honor awarded by the Pope to laity and religious. This honor was established in 1888 by Pope Leo XIII.

"Much appreciation to Bishop Conlon for his very gracious and encouraging nomination of me for this extraordinary papal honor. In addition to being a personal honor, the Church is also recognizing Lewis University and our commitment as a Catholic university in the Lasallian tradition," Brother James commented.

Now in his 26th year as President of Lewis University, Brother James has led the University during a period of significant growth with enrollment increasing to more than 6,600 students, while Lewis University has received regional and national recognition for its academic quality and mission effectiveness. During his tenure, academic offerings have expanded to include more than 80 undergraduate programs, and nearly 30 graduate programs. The campus has been transformed through an investment of nearly \$250 million in numerous construction and renovation projects.

Highly involved in service and leadership in more than a dozen external organizations, Brother James chairs the South Metropolitan Regional Higher

Education Consortium and the Community Foundation of Will County, and serves as a member of the Executive Committee and former chair of the Federation of Independent Illinois Colleges and Universities. He is also a member of the Executive Committee for the Will County Center for Economic Development. A board member and prior Chairman for the Great Lakes Valley Athletic Conference, he also participates on the Executive Council for Metropolis Strategies of Chicago.

Brother James chairs both the Lasallian Association of College and University Presidents and the Midwest District Council of the Christian Brothers. An alumnus of St. Mary's University of Minnesota, he holds master's degrees from St. Mary's and Manhattan College (N.Y.), plus a doctorate in pastoral theology from the University of St. Mary of the Lake (Ill.). Last fall, he also received an honorary doctoral degree from Bethlehem University.

Brother James was one of four Christian Brothers to receive an honorary doctorate from St. Mary's University of Minnesota at a special event on Feb. 13 to honor Brother Louis DeThomasis, FSC, President Emeritus of Saint Mary's University of Minnesota. The four Christian Brothers who were recognized included: Brother Mel Anderson, FSC, past president of Saint Mary's College of California; Brother James Gaffney, FSC, president of Lewis University; Brother Michael McGinniss, FSC, president of La Salle University and past president of Christian Brothers University; and Brother Thomas Scanlan, FSC, past president of Manhattan College and past vice chancellor of Bethlehem University (Palestine).

Together the five have served more than 125 years as leaders of Christian Brothers institutions.

Dr. Stephany Schlachter Elected to the National Board of the Lilly Fellows Program

Dr. Stephany Schlachter, Lewis University Provost, has been elected to a four-year term on the National Board of the Lilly Fellows Program in Humanities and the Arts.

Dr. Schlachter has been the Provost of Lewis since 2001. In previous years, she served Lewis as Vice President for Mission and Planning and Vice President for Mission and Development. Schlachter is a Professor in nursing and has served as both Graduate Director and



Undergraduate Director in the College of Nursing.

After receiving her Bachelor of Science degree in Nursing from Loyola University in Chicago and her Master in Nursing Education from DePaul

University, she went on to earn her Doctorate in Education at Northern Illinois University.

Founded in 1991, the Lilly Fellows Program in Humanities and the Arts seeks to strengthen the quality and shape the character of church-related institutions of learning through three programmatic initiatives. First, it offers postdoctoral teaching fellowships for young scholars who wish to renew their sense of vocation within a Christian community of learning in order to prepare themselves for positions of teaching, scholarship, and leadership within church-related institutions. Second, it supports young men and women of exceptional academic talent who are exploring vocations in church-related higher education during their first three years of graduate school in the Lilly Graduate Fellows Program. Third, it maintains a collaborative National Network of Church-Related Colleges and Universities that sponsors a variety of activities and publications designed to explore the Christian character of the academic vocation and to strengthen the religious nature of church-related institutions. The National Network represents among its current membership of 99 schools a diversity of denominational traditions, institutional types, and geographical locations.

Lewis University has been a member of the Lilly Fellows Program since 2006. The Program is based at Christ College, the interdisciplinary honors college of Valparaiso University in northwest Indiana.



President's Circle Honors Frank J. Lewis Philanthropists of the Year

Kenneth '77 and Ann Stetich '78 Gabriel, along with Sodexo, were honored on December 6, 2013 at the annual President's Circle Dinner.

Kenneth '77 and Ann Stetich '78 Gabriel

A highly regarded partner at KPMG, LLP, Ken has served on the Lewis University Board of Trustees for more than a dozen years, sharing his remarkable business acumen in the deliberations of the Board while also adding the perspective of an alumnus to discussions. He grew up in Evergreen Park, Illinois, in a very loving and ardent Catholic family who enrolled him in Holy Redeemer grammar school and then Brother Rice High School. He attributes his values, both personal and professional, to his parents, Adolph and Patricia, particularly to his father who instilled in him the importance of family and the belief that "hard work never hurt anyone." As Ken grew up and visited colleges, he met Rudy Mahalik, a former Lewis faculty member and administrator and later a University Trustee, who not only encouraged him to come to Lewis, but also promoted Ken's career interest in accounting.

Greatly devoted to her nursing career, Ann also has deep family roots, growing up on the southeast side of Chicago in a devout Catholic home and attending Immaculate Conception grammar school and St. Francis De Sales High School. Her very loving parents, Mike and Alma, instilled in her a

strong sense of family which she in turn has passed onto her children. Ann was a capable and dedicated student employee during her undergraduate years here at Lewis, serving in various capacities, including as a very responsible and caring Resident Advisor before graduating in 1978 with a Bachelor of Science degree in Nursing (BSN). She began her rewarding and deeply meaningful career as a registered nurse at St. Francis Hospital in Blue Island, loyally serving at that hospital for nearly 30 years. Currently, Ann is a registry nurse at the Justice Med-Surg Center in Justice, Illinois, in the same-day surgery unit.

Orland Park residents, Ann and Ken have been exceptionally generous and remarkably loyal in their support of Lewis since their graduation. The couple is exemplary in having made financial contributions to Lewis without fail every single year since 1985, when the University's giving records were first transitioned to a computer database. Because Ken worked his way through school, he has been especially supportive of scholarships for students with financial need.

Sodexo

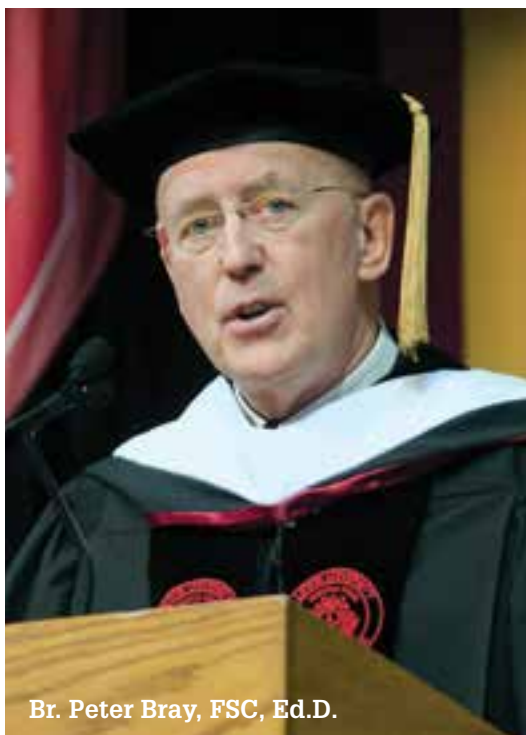
One of Lewis University's longest standing and largest vendors, Sodexo has been an exceptional partner in helping the University to successfully provide a high-quality campus experience by offering healthy and delicious dining experiences for the Lewis community, as well as furnishing comprehensive cleaning services on campus to generations of Lewis

students, faculty, staff, and other guests. In addition, Sodexo provides valuable services for hundreds of Lewis events on an annual basis. For more than 30 years, Sodexo has very proudly and proficiently advanced Lewis University by upholding its corporate commitment to provide a "clean and safe living and learning environment that inspires and drives success." Moreover, Sodexo has been consistent and generous in offering financial support of Lewis annually.

In addition to its regular responsibilities throughout campus, this multi-national corporation has established the Sodexo Scholarship Fund at Lewis University and contributes \$10,000 annually to this fund to assist students in financial need. Sodexo also has been an enthusiastic and avid sponsor for the University's annual *Signum Fidei* Celebration which helps Lewis provide needed support to students undergoing financial hardships. In support of Lewis' continued growth, Sodexo recently made a very significant financial commitment toward the development of a new Student Center, which will include expanded dining facilities on campus and will greatly enhance the overall student experience. Moreover, in the past decade, Sodexo was also a 50/50 financial partner in the design and creation of the Courtyard Café in De La Salle Hall; the renovation of the main dining room (Charlie's Place), the Flyers Den in the Student Union, and Common Grounds, a 24-hour convenience store for students located in Fitzpatrick Hall.



Diane Ballweg



Br. Peter Bray, FSC, Ed.D.



Brent Wadsworth

Commencement Ceremonies Recognize Business and Education Leaders

Lewis University awarded three honorary doctoral degrees at its Winter Commencement Ceremonies, recognizing the achievements of Diane K. Ballweg, President of Endres Manufacturing Company Foundation; Brother Peter Bray, FSC, Ed.D., Vice Chancellor of Bethlehem University; and Brent Wadsworth, Founder and Chairman of Wadsworth Golf Construction Company. Ballweg and Brother Peter were honored at the Commencement Ceremony for Graduate Students on Saturday, December 14. On Sunday, December 15, at the Ceremony for Undergraduates, an honorary degree was presented to Wadsworth.

Lewis University graduated 315 graduate students during Saturday's ceremony and 445 undergraduates during Sunday's ceremony. The Distinguished Faculty address was given by Dr. Daisy Sherry, Assistant Professor of Nursing at Saturday's ceremony. During Sunday's ceremony, Jodi Steinberg presented the Lasallian Student Commencement Address and Robert Sprunger was honored with the Father Aquinas Colgan Award.

Honorary doctoral degrees were presented to:

Diane Ballweg

Diane Ballweg is a humanitarian, educator, pilot, world traveler, volunteer and businesswoman. As President of the Endres Manufacturing Company Foundation, Ballweg guides her family company's generous funding to non-profit organizations. She launched her career as a Special Education teacher in the 1970s, but switched

in 1978 to music, providing private lessons as well as teaching in local elementary schools. Ballweg, proud mother of three children, combined her professional career with performances for nearly 25 years in a female musical group that presented concerts across the country and in Russia.

Ballweg earned her private pilot license in 1997, then her instrument rating, complex and high performance aircraft rating, and finally her advanced ground school instructor license. She launched an aviation program at Edgewood High School in 2000 and remains the program's instructor. Ballweg is a member of several organizations that support the growth and excellence of aviation, and advocates aviation as a career for women. Ballweg also has been an advocate of the Lewis University Aviation Program, promoting it to her high school aviation students, and thoughtfully contributed to the University in 2012 to help launch an endowed scholarship for female aviation students.

Ballweg has enthusiastically committed

herself to mission work both home and abroad, serving in Haiti with her son Ben after the 2010 earthquake, teaching conversational English in China, visiting orphanages in South Africa, as well as visiting with the homeless in Madison, Wisconsin – experiences which she says have opened her eyes to the diversity in the world and the need to break down barriers globally.

Frequently honored for her service, Ballweg was recognized in 1997 with the Wisconsin Aviation Person of the Year Award. In 2000, she earned the Dominican Award for Service to Humanity, from her alma mater, Edgewood College; in 2004, the Madison Community Foundation presented her with the Asset Builder Award; and the following year she received the Governor's Award in Support of the Arts. She also served as honorary chair for The Great Performance Fund at the Center for the Arts in Madison, helping to raise \$23 million for resident art groups.

Br. Peter Bray, FSC, Ed.D.

Also honored on Saturday was Brother Peter Bray, FSC, Ed.D., who serves as the eighth Vice Chancellor and administrative head of Bethlehem University, which is celebrating its 40th anniversary in educating both “the immediate Christian community and the larger Palestinian society.” Founded in 1973 and co-sponsored by the Vatican and the De La Salle Christian Brothers, Bethlehem University is the only Catholic university in the Holy Land and the first university on the West Bank. Brother Peter has been called to head the university since 2008.

Through Brother Peter’s steadfast, visionary and sensitive leadership, in partnership with the faculty and staff, Bethlehem University provides, as he states, both “an oasis of peace” and a “beacon of hope” for its students and staff, many of whom risk harm and face considerable challenges as they travel to the university under curfew through military checkpoints and areas occupied by the military. Moreover, Bethlehem University is a remarkable center of ecumenism and interfaith collaboration. Guided by Brother Peter, Bethlehem University continues to provide an “education for justice,” standing in solidarity with the students and the community, to give hope in meeting the challenges of military occupation.

Bethlehem University has enjoyed numerous accomplishments under the leadership of Brother Peter, including the recent completion of its first comprehensive capital campaign, raising approximately \$30 million, to be used for a variety of initiatives, including faculty development, student scholarship support, career training, leadership and community service, and academic facilities. The newly-opened Education Building directly and indirectly serves thousands of educators and students from the Jerusalem, Bethlehem, and Hebron regions. The university is also the recent recipient of the *Sciat vt Serviāt* Award from the International Federation of Catholic Universities for “significant and inspiring contribution to Catholic university culture.”

Prior to being appointed to head Bethlehem University, Brother Peter served for 11 years as the Director and CEO of New Zealand’s Wellington Catholic Education Centre, where he created a master’s level educational partnership with the Australian Catholic University and developed online learning technologies and delivery systems

for the Centre’s educational programs. Brother Peter earlier served as Principal of both De La Salle College in Auckland, New Zealand, for three years, and of Francis Douglas Memorial College in New Plymouth, New Zealand, for 12 years; as well as Principal of Benilde High School near Sydney, for three years.

Brother Peter also has served on numerous boards and committees. His publications focus on Lasallian spirituality and include “Collaborative Leadership in the New Millennium” and “The Evolution of a Quality School: A Case Study of Leadership.” He recently presented at the invitation of the U.S. Catholic Bishops Conference on “Religious Freedom & Human Rights: Path to Peace in the Holy Land.”

Brent Wadsworth

On Sunday, Brent Wadsworth received an honorary doctoral degree at the undergraduate ceremony.

A nationally recognized expert in the building and restoring of some of the most famous golf courses in the United States, Brent Wadsworth is locally known as a business leader and along with his wife, Jean, generous, yet understated philanthropists. Brent Wadsworth is the founder of the Wadsworth Golf Construction Company, based in Plainfield, which is one of the largest golf course builders in the nation. During the past 55 years, the firm has constructed more than 850 golf courses in the United States and restored many others, including the prestigious Augusta National Golf Club which is the home of the Masters Tournament.

Born in Buffalo, N.Y., Wadsworth moved with his family to Joliet, shortly after his birth. During his remarkable business career, Wadsworth served on several golf course industry advisory boards. His dedication to supporting the less fortunate in life through his consistent philanthropic efforts has earned him several prestigious recognitions, including a Doctorate of Humane Letters degree at Aurora University in 2008. He received the ExxonMobil Community Philanthropic Award from the Channahon

Parks Foundation of Channahon, Illinois in 2010. He also was presented with the Alumni Lifetime Achievement Award from the University of Illinois in 2011, and the Phi Gamma Delta Distinguished Fiji Award in 2012. Highly involved and generously supportive throughout this region, Wadsworth is a former Board member for the David Kinley Educational Foundation, and he was earlier active with Presence Health and the Girl Scouts—Fox Valley Council. Moreover, he has been generous in establishing numerous endowment funds for students, teachers, and programs within several area school districts, including Joliet Township High School District 204, where he once was a student, as well as being steadfast in his support of his alma mater, the University of Illinois.

Wadsworth’s exemplary work ethic and lifelong contributions to the game of golf have also earned him additional prestigious recognitions. Among them include his selection as a member of the Illinois Golf Hall of Fame in 1991; the Donald Ross Award, presented by the American Society of Golf Course Architects in 1993; the Illinois PGA Foundation’s John Gleason Ambassador of Golf Award in 2000; and the Humanitarian Don A. Rossi Award presented by the Golf Course Builders Association of America in 2000.

Proud parents of four children and two grandchildren, Brent and Jean, now married for 59 years, thoughtfully established the Wadsworth Golf Charities Foundation in 1997. The foundation has sought to make the character-building attributes of golf accessible to many more people by providing generous gifts and grants across the country to organizations, which support the foundation’s mission, of responsible self-improvement. In addition, these remarkable grants have been provided to disadvantaged youth and physically impaired persons. Friend, advisor and advocate for Lewis University, Wadsworth has also made generous contributions toward scholarships for students with financial need as well as toward significant campus improvements.

Friend, advisor and advocate for Lewis University, Wadsworth has also made generous contributions toward scholarships for students with financial need as well as toward significant campus improvements.



Dr. Daisy Sherry

Jodi Steinberg Lasallian Student Speaker

JoEllen “Jodi” Steinberg presented the Student Lasallian Address at the undergraduate commencement ceremony.

Steinberg graduated with a Bachelor of Arts degree in Public Relations/TV and Radio Broadcasting. Throughout her college career, Steinberg has been passionate about being the change she wants to see in the world. She helped start a Lewis University chapter of Enactus, which is a worldwide organization that aims to transform lives and shape a more sustainable world. “We implemented a program called the ‘Great Water Exchange,’ which asks students and faculty to change their bottled water in exchange for a biodegradable cup of flavor infused tap water and a donation to the cause,” said Steinberg. The program was to assist the oppressed people of Uganda, and to make others aware of the water deficits throughout the world.

Steinberg was Vice-President

of Enactus, a member of Alpha Lambda Sigma Honor Society, Delta Epsilon Sigma National Catholic Honor Society and an



Steinberg

Arthur Schmitt Scholar recipient. She also has participated in hosting many on-campus fundraisers, including being on air for a record-breaking 76 straight hours for the annual WLRA “To Kill a DJ” fundraiser. “It is these experiences at Lewis, which were the paradigm shift for me that changed me into a true heart-based philanthropist,” commented Steinberg.

Robert Sprunger Receives Fr. Aquinas Award

Lewis University student Robert Sprunger received the Father Aquinas Colgan Award during the University’s



Sprunger

undergraduate commencement ceremony. This special recognition is awarded to a graduating senior at each of the University’s undergraduate Commencement Ceremonies.

Sprunger graduated with a Bachelor of Arts degree in Theology and a minor in Secondary Education and Mathematics. Sprunger credits his confidence and academic growth to his student teaching experience. “I gained a better understanding of how I think, how I behave, how I interact with others, and why I do what I do. ... Being able to serve and interact with so many different people as a Lewis student, I gained a greater appreciation and desire for service,” explained Sprunger.

Involved off and on campus, Sprunger was a peer minister, member of Theta Alpha Kappa Honor Society, member of the German National Honor Society, and worked with Feed My Starving Children and the Northern Illinois Food Bank.

“Being able to serve and interact with so many different people as a Lewis student, I gained a greater appreciation and desire for service.”

Rinehart Honored with Lincoln Laureate Award

Samantha Rinehart of Marion, Iowa was recently honored by The Lincoln Academy of Illinois. The Academy honored her along with approximately 50 graduating seniors from Illinois’ higher education institutions during a ceremony hosted by Governor Patrick Quinn in Springfield.

“These students have exhibited a personal commitment to excel as seen by their remarkable academic accomplishments,” Governor Quinn said. “They serve as role models to all Illinois students. With hard-working and dedicated young leaders such as these, Illinois and the rest of the nation can look forward to a bright future.”

The Lincoln Academy’s Student Laureate Awards are presented for excellence in curricular and extracurricular

activities to seniors from each four-year, degree granting colleges and universities in Illinois. Each student received a Student Laureate Medallion, as well as a \$1,000 educational grant and a certificate of achievement.

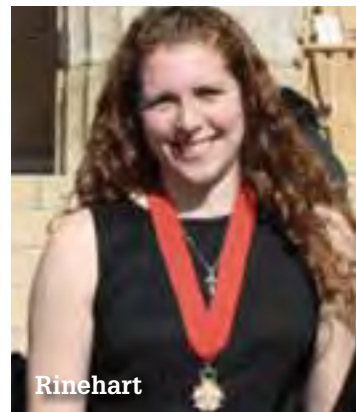
“This award is important to me because it celebrates the hard work and dedication I’ve had towards everything I have accomplished over the past four years,” said Rinehart. “This award is also a tribute to the professors, coaches and mentors that have led me on the right track to success.”

Rinehart has a double major in biology and chemistry. After graduation in the spring of 2014, she intends on attending graduate school to study material science.

For Rinehart’s hard work and academic dedication, she was awarded a paid fellowship during the summer for 2012 as part of the Lewis University Summer Undergraduate Research Experience. Rinehart’s work focused on the synthesis and characterization of Biomimetic Antimicrobial Nanocomposites for Next Generation Wound Management Materials.

She was also selected as one of 60 students nationally to present at “Posters on the Hill” in Washington, D.C. this spring.

In addition to Rinehart’s academics, she was a standout athlete participating on Lewis University’s women’s basketball team. Some of Rinehart’s court accomplishments include her as a two-time Great Lakes Valley Conference Women’s Basketball



Rinehart

Champion, four-time Academic All-GLVC honoree, four-time Br. David Delahanty, FSC, Award winner for academic success among Lewis student athletes and GLVC Player of the Week after averaging 15.3 points and 9.3 rebounds as she helped the Flyers to a 3-0 week. Her career stats include 64 starts in 114 games, an average 6.7 points, 4.2 rebounds and 20.3 minutes per game.

Lewis Men's Basketball Nets Three On All-GLVC Teams

The Great Lakes Valley Conference announced on March 4th that Lewis University juniors Ryan Jackson, Jeff Jarosz and Julian Lewis have all earned All-GLVC accolades as all three have played a crucial role in helping the Flyers to a 21-6 record this season.

The 21 victories was the most wins by a Lewis team since the Flyers went 24-7 in 2003-04.

Lewis' backcourt of Jackson and Jarosz were named to the All-GLVC First and Second Team respectively, while Lewis, a forward, was named to the GLVC All-Defensive Team.

"Obviously, individual recognition will happen when you have the kind of team success we had this year," Lewis head men's basketball coach Scott Trost said. "All three of these individuals are very deserving of any accolades they receive."

"It is certainly comforting to know that these three all have another year remaining."

Jackson earned first team honors for the second-straight year, as he led the Flyers in scoring, averaging 17.8 points-per-game - which is sixth-best in the conference. He was also named to the NABC All-Midwest Region Second Team for the second-straight season. The Bolingbrook, Ill., native, who scored his 1,000th career-point earlier in the season, knocked down a team-best 38 three-pointers and topped the squad with 140 free throws made.

"Ryan continued to prove why he is one of the better guards in the GLVC," Trost said. "He made a lot of big baskets for us in crucial games."

A first-time selection to an All-GLVC team, Jarosz chipped in 13.7 points-per-game and shot 56.1% (110-for-196) from the field.

He was second on the squad in assists (3.3 app.) and owns a GLVC-best assist/turnover ratio of 3.08 to 1.

"Jeff probably developed and matured as much as any guard in this league," Trost said. "There were times this year where he just took over and dominated the game from the point guard spot."

For the second-straight season, Lewis has been named to the GLVC All-Defensive squad. He averaged 14.3 points and a team-best 8.7 rebounds-per-contest - good for third overall in the conference. He collected a team-best eight double-doubles on the campaign.

"Julian had a fantastic season and was very deserving of an all-conference selection as well," Trost said. "I saw his confidence grow and develop into a consistent threat for us (this season)."

"Julian is as good a rebounder as there is in the league."

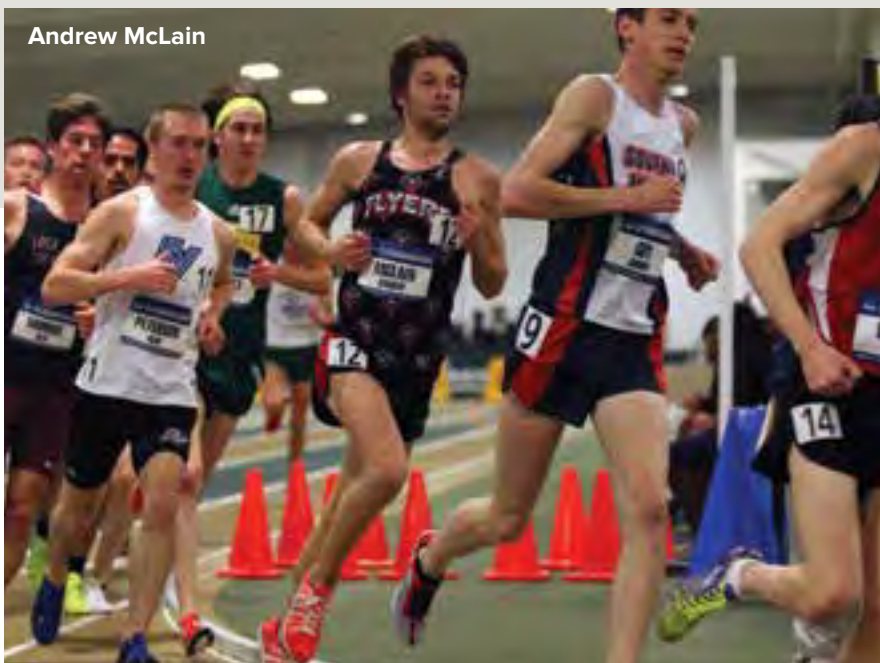


Ryan Jackson



Megan Marchildon

Andrew McLain



Jean-Paul And McLain Earn All-America Honors For Lewis Men’s Track and Field

Lewis University junior Andrew McLain and sophomore Isaac Jean-Paul both earned All-America accolades at the NCAA Division II Men’s Indoor Track and Field Championships as the Flyers tied for 41st in the nation.

McLain and Jean-Paul are the first Flyer duo to claim Indoor All-America honors since 2005. That year, Mark Zilch won the national championship in the

pole vault, while teammate Billy Stadele earned All-America status in both the pole vault and 60-meter hurdles.

McLain claimed his second-straight All-America Award in the 5,000-meter run, as he placed eighth with a time of 14:22.80. Jean-Paul cleared 6’8 ¾” (2.05m) in the high jump to finish seventh in the country.

Farrough And Marchildon Qualify For NCAA Indoor Track And Field Championships

Lewis University freshman Amanda Farrough and senior Megan Marchildon both qualified for the NCAA Division II Women’s Indoor Track and Field Championships.

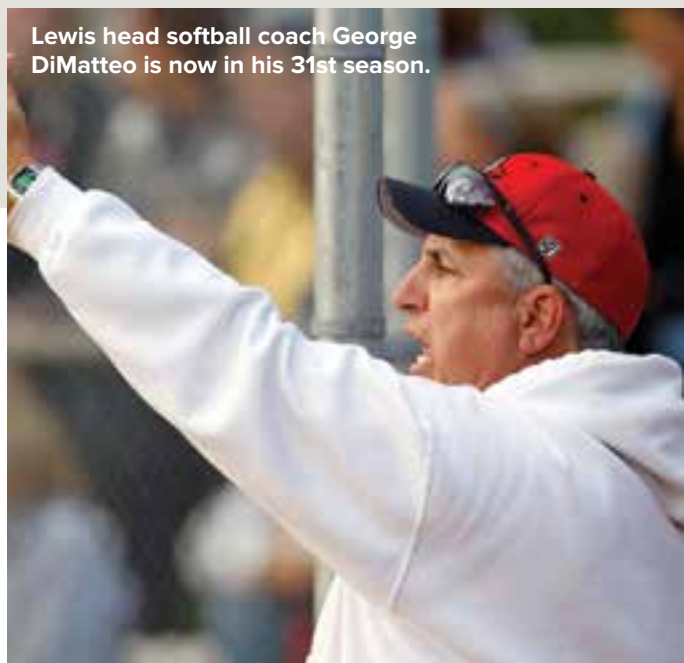
Farrough finished 14th overall in the 1-mile run (5:03.72), while Marchildon placed 11th in both the 60-meter hurdles (8.62) and pentathlon (3,463 points) at Winston-Salem State’s JDL Fast Track. Marchildon’s time in the 60-meter hurdles was a school-record.

Farrough, who earned All-America accolades in cross country this past fall, qualified in

the 1-mile run with a team-best time of 4:59.74, set at the Chicagoland Championships on February 14th. That time is the 11th fastest in the Midwest Region and 24th overall in Division II. The South Bend, Ind., native also won the 1-mile run at the Great Lakes Valley Conference Indoor Championships.

Marchildon qualified for the pentathlon for the third-consecutive year and added the 60-meter hurdles to her repertoire. Her school-record and first-place mark of 3,627 points in the pentathlon set at the GLVC Championships put her fifth overall in the Midwest Region and 10th in the country.

Lewis head softball coach George DiMatteo is now in his 31st season.



Lewis Softball Tabbed To Finish Second In GLVC East Division Poll

The Lewis University softball team has been tabbed to finish second in the Great Lakes Valley Conference East Division according to the annual GLVC preseason poll of league coaches.

Indianapolis was a near unanimous choice to win the GLVC East, as they received 14 of a possible 16 first-place votes and finished with 119 points. Conference bylaws state that a school cannot vote for itself or for its players for conference awards. Lewis received one first place vote and had 102 points for second-place in the East.

“There is tremendous balance in the East Division,” Lewis head softball coach George DiMatteo said. “Any one of the eight schools is more than capable of finishing in the top three.

“This season will be an interesting battle to the finish!”

Missouri-St. Louis was the unanimous choice to capture the GLVC West, as they earned all 15 first-place votes and finished with 120 points.

The Flyers, who advanced to the NCAA Midwest Regional Tournament last season, return the services of junior first baseman Kelsey Ullrich and junior pitchers Kelly Bowler and Ali Brems - each were named to the 2013 All-GLVC East Division Second Team.

Ullrich led the Flyers with eight home runs and was second on the team with 25 RBI in 2013. Bowler was 18-9 in the circle with a 1.92 earned run average, nine shutouts, two saves and 150 strikeouts in 186.1 innings pitched. Brems garnered a record of 13-9 with three shutouts and 104 strikeouts in 140.2 innings pitched.

Lewis' Kearney Named Midwest Region Assistant Women's Track And Field Coach Of The Year

The U.S. Track & Field and Cross Country Coaches Association (USTFCCCA) announced on March 10th, that Lewis University's James Kearney has been selected as the USTFCCCA Women's Track and Field Midwest Region Assistant Coach Of The Year.

Award winners were determined by a vote of USTFCCCA member coaches.

"While my name is attached to the honor I wouldn't have a shot of winning anything without the help of our coaching staff, administration - and most importantly - the student-athletes who represent our program and University with both class and with amazing work ethics," Kearney said.

"They are the reason this is possible and it is more about them than it is about me."

Kearney, who serves as Lewis' distance coach, helped guide the Flyers to the 2014 Great Lakes Valley Conference Women's Track and Field Championship - outdistancing second-place Indianapolis by 89 points. His distance runners accounted for 67 of Lewis' 202 points scored at the championship meet.

In all, Kearney played a key role in helping the Flyers to eight total NCAA Provisional marks with two in the 800-meter run, one in the 1-mile run, two in the 3,000-meter run and three in the 5,000-meter run.



"This is a great honor for James and our program," Lewis head women's track and field coach Dana Schwarting said. "He puts in a ton of work and the results are really starting to show."

Lewis freshman Amanda Farrough, who also earned 2013 Cross Country All-America honors under Kearney's tutelage, finished 14th in the nation in the 1-mile run at the NCAA Division II Indoor Track and Field Championships.

Swimming

The Lewis University men's and women's swimming teams collected their second-straight winning season in 2013-14 as the squads were proudly represented at the 2014 NCAA Swimming and Diving Championships in Geneva, Ohio, on March 12-15.

Sophomore Montana Clasby turned in a school-record time of 2:16.11 in the 200-yard breaststroke finishing in ninth. Senior Sarah Kenis, in her second-straight NCAA Championship appearance, finished 14th in the 100-yard breaststroke with a time of 1:03.75.

Freshmen Victor Tarin, the 2014 Great Lakes Valley Conference Freshman Men's Swimmer of the Year, and Aidan Brennan represented Lewis at the NCAA Championship Meet in the 100-yard freestyle, 200-yard freestyle and 500-yard freestyle. Brennan also competed in the 50-yard freestyle while Tarin qualified for the 100-yard butterfly.



Both squads also recently achieved the College Swimming Coaches Association of America Team Scholar All-American status for their hard work in the classroom during the fall 2013 semester.



Jake Murray



Jamie Johnson



Baseball

The Lewis baseball team was selected as the preseason favorite to win the 2014 Great Lakes Valley Conference East Division, as selected by league coaches, after the squad put together a 33-18 record and made their second-straight NCAA Tournament appearance in 2013.

Seniors Jake Murray and Tom Helwich were named as *Collegiate Baseball Newspaper* Preseason All-Americans, while senior Ben Albano and junior transfer Eann Cox were tabbed as 'Players to Watch'.

Murray and Helwich were also named to the 2014 Jaeger Sports Tino Martinez Award watch list for the most outstanding player in NCAA Division II collegiate baseball.

Helwich, a member of the 2013 All-GLVC First Team, led the pitching staff with a 10-2 record in 2013. He had four complete games, including two shutouts, and 72 strikeouts in

97 innings pitched. Helwich also posted the 13th best WHIP (walks plus hits per innings pitched) in the country (0.94), while holding batters to a .217 batting average. He was also named as a Daktronics and American Baseball Coaches Association (ABCA) All-Midwest Region First Team honoree, as well as a National Collegiate Baseball Writers Association All-Midwest Region Second Team selection.

Murray, a 2013 All-GLVC Second Team selection, led the conference in slugging percentage (.623) while pacing the Flyers in batting average (.333), home runs (10), runs (46), total bases (101), walks (35), and on-base percentage (.473). He was also tabbed as an ABCA Midwest Region Second Team selection and NCAA Midwest Regional Tournament Team honoree as a first-year Flyer.

Men's Volleyball

Lewis University redshirt junior outside hitter Geoff Powell was named Midwestern Intercollegiate Volleyball Association Offensive Player of the Week while junior libero Lucas Yanez took home MIVA Defensive Player of the Week, the conference announced on March 4.

The Flyers last swept the MIVA weekly player awards on Feb. 13, 2012 when opposite Ian Karbiener and libero Eric Varney were the offensive and defensive selections.

Powell hit .706 (37 K, 1 E, 51 TA) in six sets of play with Quincy and Lindwood. He netted a career-high .783 hitting percentage against Quincy (19 K, 1 E, 23 TA) and tallied 18 kills in 28 attempts without an error against Lindenwood.

Yanez tallied 20 digs over six sets, posting a .960 reception percentage while only committing one receiving error in 25 attempts. Against Quincy, he matched a season-high 12 digs.

Women's Basketball

The Flyers (23-6) women's basketball team's post season run was halted by Wayne State on March 16 with an 87-80 loss in the second round of the NCAA Division II Women's Basketball Midwest Regional Tournament in Springfield, Mo. The Flyers defeated Missouri-St. Louis 69-64 in the opening round to advance.

Redshirt sophomore guard Jamie Johnson was named to the NCAA Midwest Regional All-Tournament Team after posting a career-high 32 points against Wayne State. Johnson, who averaged 17.3 points and 4.3 assists-per-game, was also named to the All-Great Lakes Valley Conference First Team and All-Defensive Team.

Sophomore forward Mariyah Brawner-Henley and junior forward Jess Reinhart joined Johnson on the All-GLVC First Team. Brawner-Henley, 2014 GLVC Women's Basketball Player of the Year, paced the conference in scoring (18.2 ppg.) and rebounds (12.1 rpg) while leading the nation with 24 double-doubles in 29 contests this season. Reinhart was also in the top-10 in the league in scoring (15.4 ppg.) and rebounds (7.3 rpg).

Brawner-Henley was also named to the 2014 Daktronics All-Midwest Region First Team and is eligible for All-American status, while Reinhart earned her second-straight Daktronics All-Midwest Region Second Team accolades.

Gifts & Grants

The Lewis University experience doesn't just educate students; it transforms their lives through practical, values-based learning from educators who care about each student and who mentor as well as teach. Students emerge from their Lewis experience to face future challenges in positive ways that impact both self and society.

Gifts to the University contribute to providing not just an opportunity for students in need of financial aid to complete their education, but also create opportunities for research, competition, state-of-the-art equipment and educational tools, and top professors and educators.

Your gift to Lewis supports this mission and truly changes lives. For more information on gifts, grants, endowed scholarships, and estate planning, visit alumni.lewisu.edu/Give.

Endowed Scholarships

\$50,000 Endowed Scholarship for Accounting

John Kalec '72 looks back fondly not only at the undergraduate degree he received at Lewis, but also at how the University helped to shape and prepare him for the early years of his career. The memories, along with the passing of



his father last year at the age of 90, served as a reminder of how important his time was at Lewis. With this in mind – and inspired by the lessons learned through Lewis faculty and staff including Bob Kempiak '66, Reverend Paul Zao, Dr. Larry Hill, Roger Ashamy,

and Tom Kennedy '62 – he and his wife established the John and Karen Kalec Endowed Scholarship.

"The memories led me to making a decision over the last few months on how I can give back in a meaningful way. That meaningful way was Lewis," explains John.

After earning his degree, John spent a year working for the State of Illinois as a tax revenue auditor before switching over to a new path of accounting, joining Philips Advance Transformer in Chicago. From there he teamed with Norelco, a sister company within Philips, before transitioning to Philips Broadband. In 1985, he took the position as a CFO for Philips Consumer Electronics

before moving overseas with Philips Components. After many years of loyal service, John left Philips to join Clayton Homes until 1998 when a group of former Philips colleagues convinced him to join their endeavor, then called called Ipix, a virtual tour Internet company. In 2001, he returned to Clayton as CFO (which was later acquired by Berkshire-Hathaway) and has been with them ever since.

A proud father of four, he believes in the value of education and finding a career path that will inspire and motivate. During his career moves both within a company as well as transitioning to new opportunities, John has lived by a motto that he would share with today's college students: choose a career that offers you the opportunity to love what you do.

"If you have the passion and commitment for what you do every day, you will do very well," John says. "Lewis provides the baseline educational experience, and your career will be a continuation of that learning each and every day. Everyone should ask themselves daily if they made a difference and learned something new. Giving back to the University that built that foundation for me is one way I – and other alumni – can make a difference."

For more on John and his generous gift, visit alumni.lewisu.edu/MakeADifference.

Making an impact...

Scholarships – made available through the generous gifts of alumni and friends of Lewis University – make a tremendous impact on the lives of students each academic year. Some recipients are the first to graduate college in their families; some would otherwise need to work, taking away valuable time from studying, without the financial assistance scholarships provide.

Currently, there are more than 115 scholarships available to Lewis University students. For more information on funding a scholarship or contributing to an endowed scholarship, contact University Advancement at (815) 836-5244 or visit alumni.lewisu.edu/Scholarship.

Meet our scholarship recipients like Accounting major Brittany Granko. Brittany says, "My scholarships have motivated me more than ever to continue doing well in my classes. I feel honored to be chosen and to know others believe I can succeed."

See more messages of thanks at alumni.lewisu.edu/GiftsAtWork

Foundation Grants

\$50,000 Foundation Grant for Scholars

The Arthur J. Schmitt Foundation continued its longstanding tradition of granting Lewis \$50,000 to support Schmitt Scholar awards. The 10 awards, to be granted later this spring to five undergraduate students and five Educational Leadership doctoral students, recognize individuals who have distinguished themselves for both academic achievement and leadership activities. The Foundation was established in memory of Arthur J. Schmitt, founder of Amphenol Corporation, and continues to support Schmitt Scholar programs at 10 Catholic universities in the Midwest.

For more information on what endowed and annual scholarships are and how to contribute, visit alumni.lewisu.edu/GiftsAtWork.

\$30,000 Endowed Scholarship for Diversity

A. Scott Bolden's mother, Kathleen Bolden '71, dedicated much of her life and career to Lewis University after graduation. A pioneering African American student who went back to school as a second career, Kathleen worked at Lewis in many capacities. In honor of her dynamic character, strong beliefs, and commitment to the University, Kathleen was recognized in 2011 through the Trailblazer Endowed Scholarship. In continuation of this honor her son, A. Scott Bolden, and her family have established the Kathleen Bolden Memorial Scholarship.

Kathleen believed deeply in freedom, justice and equality for all, and was a strong believer in strong

convictions. During her tenure, she consistently demonstrated to students and administration alike her belief that there lives a leader in each person, and it is only a matter of time until that ability is tested. A member of the University during turbulent times in both the community and the nation, Kathleen strived to create a more diverse campus population while leading the local community as a civil rights activist.

"Her infectious leadership and efforts in recruiting and working with minority students to ensure their graduation and success beyond Lewis was simply amazing," says Scott. "She was fiercely loyal and completely



committed. The scholarship our family has created in her name hopes to continue to support not only her efforts with minority students, but also her legacy of leadership, her community activism, and her fight for civil rights."

For more on Kathleen, and her commitment to diversity, visit alumni.lewisu.edu/MakeADifference.

Did you know...

An endowed scholarship fund makes scholarship awards based upon the annual earnings of the fund's principal. Normally, 80 percent of the earnings are devoted to one or more scholarship awards while the remaining 20 percent of earnings are re-invested with the principal.

\$25,000 Endowed Scholarship for Marketing

Kenneth Lomasney '82, made a \$5,000 gift to the Marketing Department in 2013. The gift, presented at a scholarship awards ceremony, provided a scholarship to two students with an interest in social media marketing. The remaining funds supported the Marketing Department.

As an extension of this gift, Ken has recently established the Lomasney Endowed Scholarship with a \$25,000 gift. This scholarship will provide opportunities for graduate level business students in need of financial assistance within the MBA program.

For more on Ken and his contribution to the Marketing Department, visit alumni.lewisu.edu/MakeADifference.

Scholarships

Walgreens Awards \$7,000 Scholarship to Nursing

The College of Nursing and Health Professions was awarded a \$7,000 scholarship from Walgreens Healthcare Clinics to recognize a student in the Family Nurse Practitioners program at Lewis University for professional growth and interest in retail health care.

The award will be given to a student who embodies the mission of Lewis University and exceeds the following criteria: currently enrolled in a master's or doctoral FNP program, in their last year of study, interest in retail healthcare delivery - the student must submit an essay to the scholarship committee explaining his/her interest in retail healthcare, and award recipients

need to complete a clinical rotation at a Healthcare Clinic in Walgreens.

The Healthcare Clinics at Walgreens is partnering with Lewis University to further advance the family nurse practitioner role and the nursing profession. Their goal is to provide opportunities to develop family nurse practitioners and advance their participation in healthcare delivery.

Designed for the convenience of the professional registered nurse, Lewis University's rigorous and patient-focused master's degree in nursing program prepares students to design and execute complex



Brother James Gaffney, FSC, President, with Cathy Moynihan, Walgreens Chicago South Market Manager, Clinic Operations

healthcare strategies for a rapidly changing healthcare environment. Areas of concentration include nursing education, nursing administration, adult gerontology primary care nurse practitioner, family nurse practitioner and clinical nurse specialist.

For more information on funding scholarships opportunities, visit alumni.lewisu.edu/GiftsAtWork.

Gifts

Wadsworth Family Plaza

If the name Wadsworth sounds familiar, it's probably because the family has been generous benefactors of Lewis University for many years. Through their generosity, Brent and Jean Wadsworth supported the installation of Time Plaza, dedicated in 2006 to commemorate Lewis' 75th Anniversary. They have also funded the Brent & Jean Wadsworth Endowed Scholarship in honor of Nancy and Thomas Brodnicki, and the couple's dedication to Lewis University and education.

The Brent and Jean Wadsworth Family Gallery, located in the Oremus Fine Arts Center, and the Wadsworth Family Plaza are the newest results of the family's devotion to the University. The gallery was celebrated with a blessing in the beautifully landscaped plaza, which focuses on an impressive three-tiered fountain surrounded by the intricate landscaping distinguishes the Lewis campus.

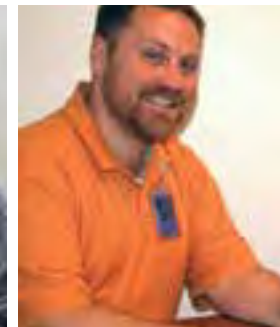
Designed as a place for those on campus to relax outdoors in a serene setting, the Wadsworth Family Plaza is located between the Academic Building and the Oremus Fine Arts Center on the Lewis University main campus in Romeoville. It features the magnificent fountain, paver paths for those going to and from the Fine Arts Center, a covered arbor walkway,

a sitting wall, colorful ornamental plants, a rose garden and environmentally-friendly landscaping. The Brent and Jean Wadsworth Family Gallery is home to many art exhibits throughout the year, from student to faculty to community artists.

"The Lewis University Community is very grateful to Brent and Jean Wadsworth for their highly generous support and creative contributions," stated Brother James Gaffney, FSC, President of Lewis University. "The Wadsworth Family Plaza is expected to become a landmark on the Lewis campus, as is the Time Plaza with its appealing clock, also made possible through their generosity. These two areas provide quiet places for members of Lewis University to study, relax, reflect and enjoy conversations with friends, for which we are most appreciative."

Watch a video of the Wadsworth Family Plaza opening at alumni.lewisu.edu/GiftsAtWork.





Who are YOU Grateful for? Tell us through the Gratitude Project!

Every day, the faculty and staff at Lewis University dedicate their lives to enriching the futures of the students. Now, we have a special campaign to thank those who have made a difference in the lives of our alumni.

We are asking alumni to make their annual gift in honor of a faculty or staff member who made a difference in their lives. Every gift includes the

opportunity to write a personal thank you note that will be sent to whomever you honor. Alumni have shared some fantastic stories about those who made a positive impact on their college career.

"I chose to honor Dr. James Houlihan because I owe him my law career," says Amy Schellekens '07. "When I was applying to law schools, he was helpful throughout the

entire process. The best lesson that Dr. Houlihan had for us is that it's not always about what you know, but who you know and how to network the best possible way. He also taught me to be persistent."

"Dr. Nancy J. Kennedy took a personal interest in her students. Her connections with students show how much she deeply cares for them," explains Adam Oldaker '08. "I practice what she modeled and try to make connections with my students. Even after they leave

my classroom, I let them know that my door is always open and they can stop by my office, e-mail or call me whenever they need to."

The goal of the Gratitude Project is to honor our exemplary educators and to raise support to strengthen and continue our Lasallian mission for years to come!

Read the messages and watch the Gratitude Project videos at alumni.lewisu.edu/GratitudeProject.

Special Celebration for First All-Decades Men's Basketball Team and Retirement of No. 14

The Lewis University Athletics Department introduced the first All-Decades Men's Basketball Team in school-history, representing the 1950s and '60s, on Saturday, January 25 at halftime of the Flyers' showdown against Bellarmine. The team includes Pat Callahan '55, Tony Delgado '65, Ray Fedo '56, Tom Kennedy '62, Al Latham '61, John Lucas '70, Bill McManaman '69, Wayne Molis '66, Bill Pauls '66, Duane Szymkowski '66, Bob Thayer '61 and Ferry Williams '68. Fedo and Molis were recognized posthumously.

"The All-Decade recognition is a fitting tribute to those Flyers who excelled on the court for Lewis University," Lewis Director of Athletics Dr. John Planek said. "It presents a chance to bring back a fine group of men to campus that represented the best of Lewis basketball."

The Flyers also retired Kennedy's No. 14. His number joined former Lewis great Larry Tucker's No. 52 in the rafters of Neil Carey Arena.



Members of the first All-Decades Men's Basketball Team from the 1950s and 1960s gather for a group photo to commemorate the occasion. In addition to celebrating members of the team, Tom Kennedy '62, had his No. 14 retired.

Kennedy, a 1982 inductee into the Lewis Athletics Hall of Fame, competed for the Flyers from 1959-62. He is currently 26th in school-history in scoring with 1,138 points. He averaged 16.7 points-per-game through his career and led Lewis in scoring in 1959-60, pouring in 13.2 points-per-game.

He was the Team MVP and a College Catholic All-American in 1962 after being named Lewis' Most Improved Player in 1960 and 61. A 13th round draftee of the Chicago Zephyrs, Kennedy also coached the Lewis' men's soccer team from 1967-69, played baseball for the Flyers and served in several administrative positions.

"Tom Kennedy's blood is truly in the bricks of Lewis University," Planek said. "Whether as a student-athlete, coach or administrator, this is a fitting tribute for a true Flyer like Tom Kennedy."

Women's sports began at Lewis in the 1970s, and plans are already in the works to recognize both an All-Decades womens' team and men's team next year representing the best Lewis basketball players of the 1970s.

For more about the members of the first All-Decades team, visit alumni.lewisu.edu/AlumniDay2014.



Networking may be one of the most overused buzzwords around, but that doesn't mean it's not important. In the surveys we have done with various alumni groups, networking opportunities are commonly cited as services that you consider very important. You

want the opportunity to expand your network and through that your knowledge and opportunities, and for good reason. Lewis graduates are civic and professional leaders.

You are part of a network that includes more than 38,000 alumni in all 50 states and 36 countries. It

is with a desire to connect you to your fellow Flyers that we hosted three networking events over the past year, with more on the way. If you haven't been able to make it to a networking event, connect with fellow graduates in our private LinkedIn group or by becoming a fan of the Lewis University Alumni and Friends facebook page. I hope you will utilize your Lewis Network to expand your personal and professional opportunities.

Go Flyers!

Reggie Bustinza
Director, Alumni Relations

Find our social media pages at
www.alumni.lewisu.edu/SocialMedia

Educationis Lumen Award Goes to Lincoln-Way Teacher

The College of Education honored Kathryn Sulkowski '06, '11, a reading advisory strategies teacher at Lincoln-Way Central, with the *Educationis Lumen* Award in December. Dr. Pamela Jessee, Dean, presented the award to Sulkowski, who has been a leader in the field of education for the past eight years. Sulkowski personifies the Catholic and Lasallian values honored in the *Educationis Lumen* Award.

"Kathy Sulkowski has been a true 'shining light' in our district since she arrived from Lewis eight years ago," said her nominator Tim Reilly, Assistant Superintendent of Lincoln-Way Central High School District 210. "She is an incredible young teacher who has made a great impact on many students. She is a superb representative of Lewis University and the College of Education."

In addition to her teaching responsibilities, Sulkowski was instrumental in the formation of the D.O.V.E. club (Developing Opportunities to Value Everyone). The club offers a forum for students of diversity and a place to feel comfortable and respected

for who they are. Sulkowski is also the sponsor for Peer Helpers and the Gamers Club, both of which lend assistance and support to students as they face various difficulties and challenges.

Sulkowski credits her success in the classroom to the education she received at Lewis and especially to the men and women she calls the "genuine and down to earth instructors at Lewis."

"One professor in particular, Brother John Vietoris, Ph.D., is someone I try to emulate every day in my classroom," explains Sulkowski of her admiration for Brother Vietoris, a long time professor at Lewis and the Department Chair for History, Culture and Civilization. Sulkowski believes that her energy for teaching comes from her aspiration to be like Brother Vietoris. "I felt awakened by his energy and I want my students to feel the same way," Sulkowski says.

When deciding where to return to school, she knew she would feel right at home at Lewis. "Lewis is special because



of the family atmosphere," she says. "They believe that all students have the capacity to learn and succeed and they do a great job at showing us, as teachers, how to be social justice advocates. They instill the belief that it's our job to reach every student."

Sulkowski is a valued member of the Student Intervention Team where students facing substance abuse issues can find counsel and support. She is the sponsor of the award-winning Breakfast Study Club, in which she volunteers her classroom each morning as a "safe haven" for students seeking help, encouragement and tutoring.

Recognized by her peers, Sulkowski was named Lincoln-Way Central High School's Teacher of the Year in 2013. She was also selected as a Lincoln-Way High School District Destination Excellence Award Recipient in 2011.

Extending her classroom to the hardwood floor, Sulkowski has become a highly successful coach of the varsity girls' volleyball team. During her five years at the helm, Sulkowski has led the team to state-wide rankings, two conference championships, two IHSA regional championships and the school record for wins in 2012 and 2013. This has earned her Illinois State Coach of the Year nominations.

Nominations Sought to Recognize Outstanding Lewis Alumni

The Lewis University Alumni Achievement Awards recognize alumni for outstanding professional, personal and civic accomplishments during Homecoming each year.

The Awards Committee is preparing its search, but needs your help in identifying outstanding alumni. We are seeking nominations for: the Distinguished Alumni Award, the Alumni Achievement Award, the Young Alumni Award and the Father Brennan Service with Honor Award.



Last year's Alumni Achievement Award recipients included Cheryl Porter '10, Guy Their '83, Colleen Walsh '05, Michael Swenson '67, The Honorable Lisa Holder White '90, Javier Solorio '06, Martin Mitrenga '74, and Frank Palmasani '75, MA '85.

Father Brennan Service with Honor Award

New this year is the Father Brennan Service with Honor Award. This award is named after Rev. John F. Brennan (1914-1994) who served his country and the Church as a priest in the Chicago Catholic Archdiocese for 55 years. He was also an army chaplain during World War II, and was wounded while serving as a chaplain to paratroopers in Gen. George Patton's army. At Lewis University, he served on faculty, as athletic director and vice president.

Father Brennan assisted in developing the athletics department at Lewis College along with teaching and serving as a chaplain there. The school awarded him an honorary doctorate degree and also named its baseball field after him.

The Father Brennan Service with Honor Award is an award series to recognize the outstanding spirit of service among our alumni. There are four award categories; one of which will be given out annually on a rotating cycle.

- **Service to Country** – for an alumnus/a who has served for a federal-level organization, and has completed an action or actions of significant distinction, or exemplified a spirit of service throughout his or her professional life. This includes the armed forces, federal-level judges and prosecutors, and federal crime fighting organizations (CIA, FBI, Secret Service, etc.)
- **Service to Church** – for an alumnus/a who has committed a lifetime to service in a religious organization, or had a notable achievement in such a field.
- **Service to Community** – for an alumnus/a who has exhibited an exemplary commitment to making his or her community a better place through a distinguished accomplishment or a lifetime of service.
- **Service to Lewis** - for an alumnus/a who has excelled in his or her service to Lewis University. This may include a professor, administrator, adjunct faculty member, or volunteer.

Distinguished Alumni Award

The Distinguished Alumni Award recognizes Lewis graduates who have demonstrated ideals consistent with the mission of the University; distinguish themselves in their chosen professions; serve in leadership roles within their communities; and excel in accomplishments in personal and civic life. Since 1982, this award is presented annually to a graduate nominated by alumni or members of the Lewis community.

The Alumni Achievement Award began in 1992, and shares many of the same criteria as the Distinguished Alumni Award. However, this award is bestowed upon multiple recipients representing various disciplines and career fields. Alumni Achievement Awards recognize alumni who have achieved significant accomplishments in their personal and professional lives.

Young Alumni Award

The Young Alumni Award, launched in 2007, shares many of the same criteria as the other awards. The Young Alumni Award seeks out one or two young alumni (32 years old or less) who represent various disciplines and career fields.

To learn more about the Alumni Awards, see past winners, and find a nomination form, visit alumni.lewisu.edu/AlumniAwards.

Alumni Spotlight

Lea Ann Nemanich Johnson '71 and Arvid Johnson '85

The Value of a Liberal Arts Education: The Opportunity to Become a College President

Lewis University provides more than 6,600 students with programs for a liberal and professional education inspired by its Catholic and Lasallian heritage. The strong academic and service-based foundation has graduated many well-rounded and high-achieving individuals, from CEOs to professional athletes. In 2013, a new and unique distinction was bestowed upon Lewis with the inauguration of two University graduates to presidency positions in institutions of higher learning: Dr. Lea Ann Nemanich Johnson '71 began her presidency at Maria College in Albany, New York, as the University of St. Francis in Joliet, Illinois welcomed Dr. Arvid Johnson '85.



Dr. Lea Ann Nemanich Johnson '71

Both graduates recall strong memories of Lewis University based around the belief that a liberal arts education and co-curricular activities greatly enhance the overall academic strength of a Lewis University education. Arvid and Lea both serve as prime examples of how a liberal education can benefit graduates, opening doors throughout their careers that lead to inspiring and exciting opportunities outside of their original career plans.

Arvid began his career not in academia, but in the defense/aerospace industry. He spent over 15 years in engineering, manufacturing, and senior management in a diverse range of business environments. He began his venture in academics in 2001 as a Professor of Management before serving as the Dean of the Brennan School of Business at Dominican University. After earning his bachelor's degree in physics from Lewis University and a master's degree in electrical engineering from Northeastern University in Boston, Arvid also earned an MBA from the Kenan-Flagler Business School at the University of North Carolina as well as a PhD in management science from the Stuart School of Business at the Illinois Institute of Technology. He met his wife, Anne (Jordan) Johnson '87, while she was studying as a mathematics major at Lewis University, and their three sons currently attend liberal arts universities.

"The wonderful part about the education we received at Lewis is that it is a liberal education," says Arvid. "We weren't only focused on one particular job or career; our eyes were opened to the vast opportunities and functions of the world around us. Having taken a little philosophy and religion combined with mathematics and science gives



Dr. Arvid Johnson '85

graduates a stronger background because they are more versed in many aspects of society."

Arvid strongly believes this form of education creates alternative career opportunities for graduates. A liberal arts education, he says, provides students with the skillset they need to move and change throughout their careers, leading them to opportunities that they may not have known existed while they were in school.

Lea also began her career outside of academia, spending several years building a career in publishing. For a time, she was also a board certified adult nurse practitioner – a calling she deeply valued – before becoming heavily involved in administrative positions. In her higher education career, she has worked in administration at Suffolk University, MIT, Northeastern University, and as Dean of Business at American International College. In addition to earning her bachelor's degree from Lewis University, Lea earned a master's in psychology from Western Illinois University, a master's in public relations from Boston University and a master's in nursing from the MGH Institute of Health Professions. She earned her doctorate in higher education management from the University of Pennsylvania.

Her mother, Elinor Nemanich, graduated from Lewis in 1964 after attending college while raising a family

and working full time – a feat Lea says she did not fully appreciate at the time. Her mother’s graduation was the first college graduation Lea ever attended and she remembers thinking how exciting it all was. Lea followed in her mother’s footsteps, becoming the second member of the family to graduate from Lewis, followed by her brothers Scott ’74 and Brett ’77. Lea and her husband Walter, a nuclear physicist, have two children and have always stressed to them the importance of continued learning.

“Over time I’ve learned that the value of the college degree is that it provides you with a powerful foundation to build upon – with new experiences, interesting career opportunities, and graduate education. Think of that baccalaureate degree as just the beginning. I always tell students – and my own children – to keep their options open. Majoring in a particular discipline does not mean you will automatically dedicate your life to that area – you might, but it is just as likely that you will branch out into other areas as you continue to develop as a person,” explains Lea.

Both acknowledge that it takes many players to form a successful team, whether that team is a class of college graduates or an educational department. What words of wisdom have inspired these alumni as they’ve paved the roads to their current careers?

“Always believe in yourself and trust your instincts. When you are given a tiny piece of information, roll it out to its logical conclusion and it will usually provide you with the truth,” says Lea. “When trying to convince others that you have a wonderful idea, let them help you develop and shape the idea prior to bringing it forward. By doing so you have automatic buy-in and support, and your road to acceptance and approval for the idea will be much easier.”

“Sister Noel Dreska, a long-serving physics professor at Lewis University, always told me to make a decision based upon the information you have, and then don’t look back,” adds Arvid. “And my father always stressed the importance of getting to really know your entire team, no matter their job title or salary. Everyone has value, and you can only serve someone if you recognize the divine in each and every person.”

Trivia Challenge

These two presidents have some amazing accomplishments and memories of Lewis. See if you can match the fact to the appropriate person. (Hint: Arvid and Lea each have seven, and you can find the answers online at alumni.lewisu.edu/MakeADifference.) Submit your answers to alumni@lewisu.edu by May 15, 2014, for a chance to win a Lewis prize pack!

1. Founded and served as the chair of Information Resources, Inc.’s Analytics Advisory Board from 2003-2008.
2. Awarded the International Academy of Business and Public Administration Disciplines’ Research Award (2011, 2012) and the *Business Ledger’s* Entrepreneurial Excellence Award for Service to Entrepreneurs (2010).
3. Founder of the Boston Model – a 12 hospital collaboration including Massachusetts General Hospital (MGH), Brigham and Women’s Hospital, Children’s Hospital and others, to develop educational programs to retrain registered nurses.
4. Developed the first RNFA (Registered Nurse First Assistant) program in Boston.
5. Cites Dr. Paul Kaiser, Dr. Steve Berger, Brother Bernard Rapp, Dr. Rafael Alessia, and Brother Daniel Susek among favorite educators at Lewis University.
6. Performed in Chicago’s Orchestra Hall as part of the Lewis College Chorale with Enoch Estep as the director.
7. Believes that a liberal arts education, and the breadth of classes available to students, will prepare them “not just for the jobs of today, but for the jobs of tomorrow.”
8. Former Vice President at Hill and Knowlton, International.
9. Founding Director of the Bouve Institute for Healthcare Leadership and Professional Development at Northeastern University
10. Recipient of the Massachusetts AORN President’s Award for Educational Leadership
11. Holds 9 U.S. (and dozens of foreign) patents.
12. Served as co-editor of *INSIGHT 71* – our college yearbook.
13. Presented with Dr. Leonard Weisenthal on a research project at the ACCA Symposium on the topic of “Resonance Jump Phenomenon and the Texas Tower.”
14. Has published and presented on quantitative analysis, microwave materials processing, advanced manufacturing practices and strategic management.

For more featured alumni, visit

alumni.lewisu.edu/FeaturedAlumni

Class Notes

1970s



Michael W. Skarr '78 (*Graduate, Business Administration*) currently the Director of Wheaton Bank & Trust, was recently elected as a member of the Metropolitan Family Services DuPage community board. Additionally, Skarr will continue to keep his seats as President of the Friends for Lisle Township Foundation, board member of Virtual Learning Solutions, President of Not-for-Profit Strategies and Solutions, LLC, and as a member of the Naperville Heritage Society's Finance Committee.

1980s

Thomas L. Jones '80, '87 (*Criminal/Social Justice; Graduate Criminal/Social Justice*) was recently promoted to Assistant Superintendent of Programs at IYC-Warrenville. He was previously employed at the Illinois Department of Children and Family Services, for more than 24 years, as a senior child welfare specialist.



Rev. William G. Ressler '85 (*Economics*) received his Ph.D. in theology, ethics, and the human sciences from the Chicago Theological Seminary this past October. His research examined a new paradigm of practice, at the intersection of social work and pastoral theology, out of the historical foundations of the work of Jane Addams/Hull House and the Rev. Graham Taylor/Chicago Commons, early Chicago settlement house founders and social workers. In addition to maintaining a private practice as an LCSW, Rev. Ressler serves as a Co-Pastor, together with his wife the Rev. Penny Taylor, at Trinity Community Church, UCC in Berwyn. He also teaches as an Adjunct Professor of Social Work at Dominican University Graduate School of Social Work and Aurora University School of Social Work in Aurora.



James P. Jones '86 (*Accounting*) was recently promoted to Firm Principal of Legacy Professionals LLP. Jim currently serves as the Firm's Administrator and IT Director. Legacy Professionals LLP is a Chicago-based certified public accounting firm with offices in Minneapolis and Schererville.

Brian M. Schank '87 (*Aviation Maintenance Management*) was recently hired as Vice President of Sales and Marketing at Elliott Aviation, a leader in a diverse set of business aviation services. In this position, he will be responsible for leading all sales and marketing efforts for Elliott Aviation's aircraft maintenance, repair and overhaul operations in various cities. Schank joins Elliott Aviation after 25 years with Gulfstream Aerospace.

1990s

Michael Williams '92 (*Graduate Business Administration*) was recently hired by St. Meyer and Hubbard as a Senior Consultant, to serve the training and coaching needs of its financial services clients. Previously, he has been CEO, Division President, Head of Mortgage and Training Manager during his 20-plus year banking career. He began his career at Household International and Household Bank.

Patrick Finlon '93 (*Graduate Criminal/Social Justice*) was recently selected to be the Village of Cary's police chief. Previously, he was the police chief for Lake Zurich. He has lived in Cary for 23 years, coached for the Cary-Grove Youth Baseball Team and Softball organization, been a Cary-Grove High School booster, and helped develop the Village's disaster plan.

Timothy J. Tierney '03 (*Radio/TV Broadcasting*) was recently selected to receive the prestigious Corinthian Colleges Parthenon Award for 1st Quarter FY13 at Everest College. He was also recognized as the "Employee of the Campus" for the 4th Quarter of FY12, recommended by the management team of the campus in Colorado Springs. He currently resides in Colorado Springs and works in Admissions at Everest College.

Dr. Karen Sullivan '09 (*Doctor of Education*) has been appointed as the next Superintendent of Schools for the Indian Prairie School District 204.

Dr. Sullivan is a familiar face in District 204, with 18 years of experience in the areas of special education, human resources, and leading schools. Since 2011, she has served as Assistant Superintendent of Human Resources. In her current role, she has established a strong working relationship with the associations that represent the teaching and clerical staff. As lead negotiator, she has successfully negotiated contracts with both groups.

She also served as the first Principal of Prairie Children Preschool and Principal of Cowlshaw Elementary School, as well as Director of Student Services. While at Cowlshaw Elementary School, she increased overall student achievement by 12 to 15 percent and narrowed the achievement gap at a school with a growing diverse student population.

Dr. Sullivan also gained experience working in

2000s



Ashley M. Accettura '06 (*Public Relations*) was recently named Leasing Agent of the Year by the Chicagoland Apartment Association at its annual Chicagoland Apartment Marketing and Management Excellence (CAMME) awards ceremony. Presented by the Chicagoland Apartment Association, *Apartments.com* and the *Chicago Tribune*, the CAMME Awards celebrate multi-family housing companies and professionals that have made significant contributions to or achieved excellence in the industry. Currently, Ashley is the leasing agent at The Residences at The Grove in Downers Grove.

2010s

Elmhurst Community Unit School District 205, where she served as Assistant Superintendent of Curriculum and Instruction. While there, she implemented an intervention system used to better support students with special needs. She also facilitated the incorporation of Common Core State Standards into the district's curriculum.

Dr. Sullivan began her career in 1981 as a Speech/Language Pathologist in the Flossmoor-based South Metropolitan Association, a special education cooperative that provided services to south suburban school districts. She went on to lead the group's parent/infant program and later was named the Director of Grants and Special Projects.

In addition to her doctoral degree, she earned a Master of Science in Speech/Language Pathology and a Bachelor of Science in Speech and Hearing Science from the University of Illinois.

Forum P. Patel '07 (*Nursing*) recently joined Carle Foundation Hospital in Urbana as a Nurse Practitioner.

Antonio D. Mannings '12 (*Graduate Organizational Leadership*) is a decorated combat veteran having served as a Security Forces Journeyman in the United States Air Force from 2002 through 2005 in campaigns Operation Iraqi Freedom and the Global War on Terrorism. While serving in the Air Force, he achieved an associate degree in Criminal Justice. Upon his discharge and return to Chicago, he returned to school and received a B.A. in Business from Chicago State University. He has worked in a series of management positions throughout his career, first in retail industries, but then shifting to the educational arena. Currently, he is a Marketing Manager for Pearson Embanet in Elk Grove Village.

Kevin Whelehan Jr. '12 (*Criminal/Social Justice*) was recently hired as Director of Fire, EMS and Security for Ford Motor Company's Chicago Stamping Plant in Chicago Heights.

Rachel C. Stella '13 (*Mass Communications*) was recently hired as a reporter for the *La Salle News Tribune* in LaSalle.

In Memoriam

Richard A. Lorenz '01 (*Business Administration*) passed away Tuesday, October 15, 2013.

Jose Cruze Avila-Galvez '10 (*Psychology*) passed away Friday, November 15, 2013.

THINKING OUTSIDE THE WILL

Did you know it's possible to provide for Lewis University without changing your will or living trust? Here are three charitable gift planning ideas which are very easy to arrange, that will allow you to create extraordinary opportunities for future generations of our students:

LIFE INSURANCE – You can name Lewis University as the beneficiary of a policy or transfer ownership of a policy that is no longer needed for your family's security.

RETIREMENT ACCOUNTS – You can name Lewis University as a beneficiary of all or part of an IRA or other qualified retirement plan, avoiding income tax your family might have on distributions.

BENEFICIARY DESIGNATIONS – Savings accounts can generally be designated to pass at death to an individual or charity, without affecting your use of the funds during your lifetime.

For more information on beneficiary designation planning, please contact Robert A. Kanonik, JD, Director of Planned Giving at (815) 836-5813 or kanoniro@lewisu.edu.

Engagements



Jessica J. Jennings '11 (*Psychology & Criminal Justice*) to Justin Holman. They are set to be married June 28 at Our Savior's Lutheran Church in Seneca. Jessica is currently employed and interning at Seneca Township High School.

Jennifer L. Baluk '09, '10 (*Finance; Graduate Finance*) to **Anthony J. Bertucci '08, '10** (*Accounting; Graduate Business Administration*).

Joseph Carbone '10 (*Accounting/Finance*) to **Brianna F. O'Rozco '12** (*Psychology*). They are engaged to be married at St. Cyril's and Methodius Church in Lemont in August of 2014.

Justin M. Homer '12 (*Graduate, Criminal/Social Justice*) to Amanda Derhake. The couple is set to be married on September 20, 2014, at Grand Bear Lodge in Utica.

Future Flyer



Maggie M. Senese '07 (*Political Science*) & **Victor J. Senese '09** (*Elected Studies*) welcomed Erin Elizabeth (6 lbs 9.5 oz, 19 inches) on August 12, 2013. She joins big brother, Victor and sisters, Cailin and Molly.

Marriages

Stefanie J. Aievoli '08, '13 (*Nursing; Graduate Nursing*) married Frank Aievoli this past summer. She is currently teaching BSN nursing students at Chamberlain College of Nursing in Chicago.

Lacey A. Granko '13 (*Computer Science*) married **Robert Granko '13** (*Computer Science*). The couple's engagement took place on campus in the Computer Science Department. They met during the Fall Semester of 2012.

For more class notes, and to submit your updates, visit alumni.lewisu.edu/classnotes

AlumniEvents

Events



- ❶ Nathan Klaas '10, Mike Iandolo '10, Aaron Flick '11, Men's Volleyball Coach Dan Friend, Eli Masud '10, Brian Schmidt '11, Brian Muesenfechter '11, and Brian Collins '13 take a moment to visit before the Men's Volleyball Alumni Gathering November 16, 2013.
- ❷ James Worst '70, James Nelson '79, and Linda Campbell '81 '12 supported the Men's and Women's basketball teams as the Flyers took on Northwestern on November 6, 2013.
- ❸ Jose (Freddy) Ibarra '11, his wife Lorena and his children Adriano, Iris and Itzali.
- ❹ Dr. Kurt '98 and Eileen Schackmuth attended the annual Cookies with Santa with their son, Thomas.
- ❺ Ron Pollak '13 and Ron Jovi Ramirez '13 stopped by the Romeoville Campus to speak to current Lewis students about their experiences as Lasallian Volunteers as well as to promote the program.
- ❻ John Lucas '70, Tom Kennedy '62, and Bill McManaman '69 visit before the All-Decades Basketball

Photos from all of our events can be viewed at

alumni.lewisu.edu/PhotoGallery



9



10



11

Team is announced on January 25, 2014. 7 Mary Jane Whiteside and Board of Trustee member Dennis Tonelli brought his granddaughters, Emma and Olivia to the Philip Lynch Theatre's production of *To Kill A Mockingbird* on November 15, 2013. 8 Bob Martineau, Bob Calamari, Ken Mularski, and Lewis staff member Tom Kennedy recently visited in Chicago. These alumni all played baseball on the 1962 team that finished 3rd in the nation. 9 Over 20 alumni and friends gathered at the home of Ed and Sandy Prodehl in Florida on February 28 to visit with Brother James Gaffney, FSC, and learn more about what is new at Lewis University. 10 Tom Joyce '66, Ed Stevens '65, Tom Lyons '66, Mike Ford, and Bill Pauls '66 catch up during Alumni Day 2014. 11 Jim '60 and Fran Sczepaniak visit with Brother James Gaffney, FSC, prior to the start of the *Moonlight and Magnolias* production at the Philip Lynch Theatre.



2014 FREQUENT FLYER SCHOLARSHIP PROGRAM

25% TUITION SCHOLARSHIP FOR LEWIS UNIVERSITY ALUMNI

For a limited time, Lewis University alumni qualify for a 25% tuition scholarship when admitted into a graduate degree, doctoral degree, second bachelor degree or qualifying certificate program at Lewis University.

Eligibility Guidelines

- The student's degree will be verified with the Registrar's Office at the time of application.
- The Frequent Flyer Scholarship can be applied to all undergraduate, graduate and qualifying certificate programs at any location and online.*
- Applicants must meet program admission requirements.
- Applies to Alumni who are admitted and enroll into a new program during the 2014 Summer and Fall terms.
- The Frequent Flyer Scholarship awards an amount equal to 25 percent of the published per credit hour tuition rate for the program.
- The Frequent Flyer Scholarship may not be used in combination with other Lewis University scholarships, discounts, waivers or awards.
- The student must pay for all fees and the cost of books and supplies associated with courses.
- The scholarship will apply throughout the duration of the program as long as the student is concurrently enrolled.

Admittance Period

Summer 2014 and
Fall 2014 Terms.

For more information regarding eligibility, please contact the Office of Graduate and Adult Admission
grad@lewisu.edu
(815) 836-5610

**Note: In situations where an applicant is eligible for more than one discount or scholarship, the higher level discount or scholarship will apply. The tuition rate should be confirmed and verified by the Admissions Counselor at the time of registration.*



One University Parkway
Romeoville, IL 60446-2200
(815) 836-5610

www.lewisu.edu



One University Parkway
Romeoville, IL 60446-2200
(815) 836-5250
www.lewisu.edu

NON-PROFIT
U.S. POSTAGE
PAID
LEWIS
UNIVERSITY

CHANGE SERVICE REQUESTED

SAVE THE DATES

2014 VARSITY CLUB
**ALUMNI
GOLF
OUTING**
JUNE 6, 2014
COG HILL GOLF CLUB



PALMER HOUSE • CHICAGO

SIGNUM FIDEI

SEPTEMBER 13, 2014



For more
information, visit
the alumni website
calendar of events at
**[alumni.
lewisu.edu](http://alumni.lewisu.edu)**

2014 **HOMECOMING**
OCTOBER 4, 2014

